

RAFIX 22 FS

Contact blocks

PCB gold

→ Illumination information

The PCB contact blocks are included into the PCB layout and arranged next to other components. They are located directly behind the actuators at a distance of only 9.2 mm behind the front panel.

When actuators shall be illuminated there are 2 alternative LED technologies.

THT LEDs: Can be assembled and soldered together with the PCB contact blocks.

SMT LEDs: Can be pre-assembled and soldered with other SMT components. Then they are covered by the PCB contact blocks with light conductor.



Technical Data

→ General information

| | |
|---------------|-----------------|
| Lamp optional | see order block |
|---------------|-----------------|

→ Mechanical design

| | |
|--|--|
| Mounting | soldering in PCB |
| Contact system | bridge-contact self cleaning |
| Contact materials | Au |
| Contact arrangement | see order block |
| NC contact forcibly actuated acc. to IEC 60947-5-1 | yes |
| Terminals | THT solder terminals with locating lug |

→ Electrical characteristics

| | |
|--------------------------------|--------|
| Operating voltage AC / DC min. | 5 V |
| Operating voltage AC / DC max. | 35 V |
| Operating current AC / DC min. | 1 mA |
| Operating current AC / DC max. | 100 mA |
| Rated power max. | 250 mW |

→ Other specifications

| | |
|--|--|
| Operating life at 10 mA / 24 V DC | see order block |
| B10 | see order block |
| Switching reliability at 24V / 5mA DC | 10×10^6 |
| Ambient temp. operating max. | +85 °C |
| Ambient temp. operating min. | -40 °C |
| Storage temperature min. | -40 °C |
| Storage temperature max. | +85 |
| Color of plunger | see order block |
| Robustness | acc. to IEC 60947-5-5 (TÜV) |
| Shock resistance acc. to IEC 60068-2-27 | 15 g at 11 ms, amplitude half sinusoidal |
| Resistance to vibrations acc. to IEC 60068-2-6 | 5 g at 10 ... 500 Hz |
| Environmental resistance | acc. to IEC 60068-2-14, -30, -33 and -78 |
| Solderability / solder heat resistance | DIN EN 60068-2-20 |
| Solder techniques | wave solder bath / manual soldering |
| Color of housing | grey |
| ROHS compliant | yes |
| REACH compliant | yes |

Approvals



Distributed by:








Contact
blocks

CONTROL COMPONENTS

RAFIX FS - CONTACT BLOCKS PCB GOLD

Accessories RAFIX 22 FS - Contact block PCB gold

| → Description | Photo | Order no. | Additional accessories see page |
|--|--|-----------|---------------------------------|
| LED 3 mm |  | - | - |
| LED base for 3 mm THT LED, used in signal indicators, for RAFIX FS PCB |  | - | 2 - 263 |
| SMT LED |  | - | 2 - 263 |
| Spacers, round |  | - | 2 - 265, 4 - 97, 5 - 32 |
| Spacers, triangular |  | - | 4 - 98, 5 - 33 |



RAFIX FS Contact block PCB gold, Universal, with light conductor

Technical data see page 2 - 241



| → Contact arrangement | Lamp optional | Operating life at 10 mA / 24 V DC | B10 | Color of plunger | Order no. |
|-----------------------|---------------|-----------------------------------|-----------|------------------|-------------------|
| 1 NO | SMT LED | 1,000,000 | 1,300,000 | green | 1.20.126.002/9000 |
| 1 NC | SMT LED | 1,000,000 | 1,300,000 | red | 1.20.126.001/9000 |
| 2 NO | SMT LED | 1,000,000 | 1,300,000 | green | 1.20.126.005/9000 |
| 2 NC | SMT LED | 1,000,000 | 1,300,000 | red | 1.20.126.004/9000 |
| 1 NC + 1 NO | SMT LED | 1,000,000 | 1,300,000 | red and green | 1.20.126.003/9000 |

Caution: can not be used with emergency stop and mushroom headed pushbuttons.

DISTRIBUTED BY TEXIM EUROPE

RAFIX FS Contact block PCB gold, Universal

Technical data see page 2 - 241

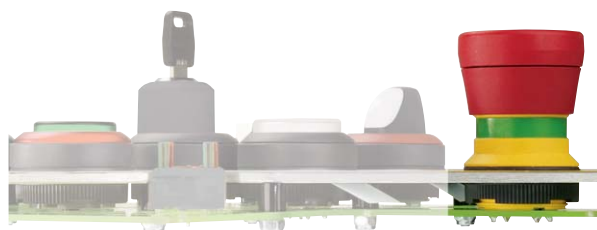


| → Contact arrangement | Lamp optional | Operating life at 10 mA / 24 V DC | B10 | Color of plunger | Order no. |
|-----------------------|---------------|-----------------------------------|-----------|------------------|-------------------|
| 1 NO | THT LED | 1,000,000 | 1,300,000 | green | 1.20.126.002/0000 |
| 1 NC | THT LED | 1,000,000 | 1,300,000 | red | 1.20.126.001/0000 |
| 2 NO | THT LED | 1,000,000 | 1,300,000 | green | 1.20.126.005/0000 |
| 2 NC | THT LED | 1,000,000 | 1,300,000 | red | 1.20.126.004/0000 |
| 1 NC + 1 NO | THT LED | 1,000,000 | 1,300,000 | red and green | 1.20.126.003/0000 |

Caution: can not be used with emergency stop and mushroom headed pushbuttons.

RAFIX FS Contact block PCB gold, E-Stop, with light conductor

Technical data see page 2 - 241



| → Contact arrangement | Lamp optional | Operating life at 10 mA / 24 V DC | B10 | Color of plunger | Order no. |
|-----------------------|---------------|-----------------------------------|-----------|------------------|-------------------|
| 1 NO | SMT LED | 1,000,000 | 1,300,000 | green | 1.20.126.402/9000 |
| 1 NC | SMT LED | 1,000,000 | 1,300,000 | red | 1.20.126.401/9000 |
| 2 NO | SMT LED | 1,000,000 | 1,300,000 | green | 1.20.126.405/9000 |
| 2 NC | SMT LED | 1,000,000 | 1,300,000 | red | 1.20.126.404/9000 |
| 1 NC + 1 NO | SMT LED | 1,000,000 | 1,300,000 | yellow | 1.20.126.403/9000 |

CONTROL COMPONENTS

RAFIX FS - CONTACT BLOCKS PCB GOLD

– Table (continued) –

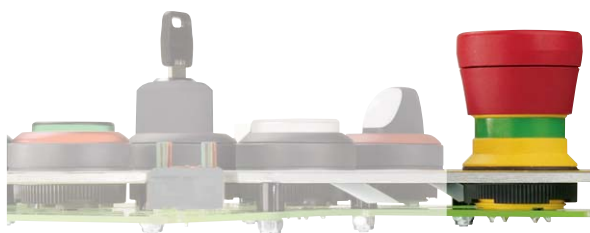
RAFIX FS - Contact block PCB gold, E-Stop, with light conductor

Caution: E-stop contact blocks can only be used with emergency stop and mushroom headed pushbuttons.



RAFIX FS Contact block PCB gold, E-Stop

Technical data see page 2 - 241



| → Contact arrangement | Lamp optional | Operating life at 10 mA / 24 V DC | B10 | Color of plunger | Order no. |
|-----------------------|---------------|-----------------------------------|-----------|------------------|-------------------|
| 1 NO | THT LED | 1,000,000 | 1,300,000 | green | 1.20.126.402/0000 |
| 1 NC | THT LED | 1,000,000 | 1,300,000 | red | 1.20.126.401/0000 |
| 2 NO | THT LED | 1,000,000 | 1,300,000 | green | 1.20.126.405/0000 |
| 2 NC | THT LED | 1,000,000 | 1,300,000 | red | 1.20.126.404/0000 |
| 1 NC + 1 NO | THT LED | 1,000,000 | 1,300,000 | yellow | 1.20.126.403/0000 |

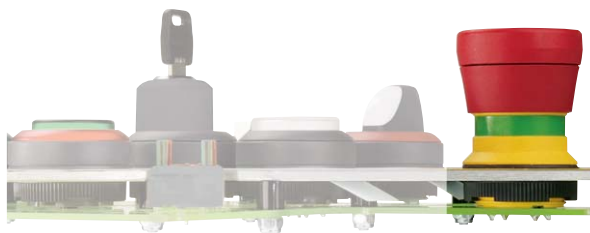
Caution: E-stop contact blocks can only be used with emergency stop and mushroom headed pushbuttons.

Contact
blocks



RAFIX FS Contact block PCB gold, E-Stop, „Plus 1“

Technical data see page 2 - 241



| → Contact arrangement | Lamp | Operating life at 10 mA / 24 V DC | B10 | Color of plunger | Order no. |
|-------------------------|------|-----------------------------------|--------|------------------|-------------------|
| 2 NC + 1 signal contact | - | 50,000 | 65,000 | red | 1.20.126.414/0000 |

DISTRIBUTED BY TEXIM EUROPE

– Table (continued) –

RAFIX FS - Contact block PCB gold, E-Stop, „Plus 1“

Caution: E-stop contact blocks „Plus 1“ can only be used with emergency stop pushbuttons „Plus 1“.

The Netherlands



Elektrostraat 17
NL-7483 PG Haaksbergen

T: +31 (0)53 573 33 33
F: +31 (0)53 573 33 30
E: nl@texim-europe.com

Belgium



Zuiderlaan 14 bus 10
B-1731 Zellik

T: +32 (0)2 462 01 00
F: +32 (0)2 462 01 25
E: belgium@texim-europe.com

UK & Ireland



St. Mary's House, Church Lane
Carlton Le Moorland
Lincoln LN5 9HS

T: +44 (0)1522 789 555
F: +44 (0)845 299 22 26
E: uk@texim-europe.com

Germany North



Bahnhofstrasse 92
D-25451 Quickborn

T: +49 (0)4106 627 07-0
F: +49 (0)4106 627 07-20
E: germany@texim-europe.com

Germany South



Martin-Kollar-Strasse 9
D-81829 München

T: +49 (0)89 436 086-0
F: +49 (0)89 436 086-19
E: germany@texim-europe.com

Austria



Warwitzstrasse 9
A-5020 Salzburg

T: +43 (0)662 216 026
F: +43 (0)662 216 026-66
E: austria@texim-europe.com

Nordic region



Sdr. Jagtvej 12
DK-2970 Hørsholm

T: +45 88 20 26 30
F: +45 88 20 26 39
E: nordic@texim-europe.com

Italy



Via Matteotti 43
IT-20864 Agrate Brianza (MB)

T: +39 (0)395 967 226
F: +39 (0)395 967 226
E: italy@texim-europe.com

General information



info@texim-europe.com
www.texim-europe.com