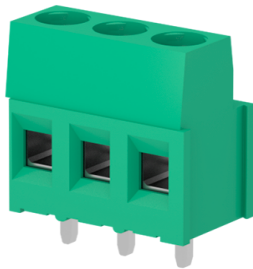


MSM10001 - Terminal block

<https://www.sauro.net/it/prodotto/MSM10001>



Distributed by:



Number of poles: 10, Clamp tightening, 24A, 2.5mm², 12AWG, 300V, Pitch 5 mm, Modular, Connection Angle 0°, Number of levels: 1, Green (RAL 6032), Soldering technology Wave, UL, VDE, IMQ, CSA, CUL, IEC

Dati generali

| | |
|---------------------|-----------------------------|
| Number of poles | 10 |
| Number of levels | 1 |
| Sides configuration | Modular |
| Pitch | 5 mm |
| Voltage | 300 V |
| Current | 24 A |
| Housing composition | Monolithic |
| Wire section | 2.5 mm ² |
| Wire section | 30 AWG ÷ 12 AWG |
| Connection angle | 0° |
| Available approvals | UL, VDE, IMQ, CSA, CUL, IEC |
| Stripping length | 6.5 mm |

Caratteristiche

| | |
|-------------------------------|-----------------------------------|
| Screw dimension | M3 |
| Recommended tightening torque | 0.5 Nm |
| Operating temperature range | -40°C ÷ 105°C |
| Climatic category | -40/105/21 according to EN60068-1 |
| Contact resistance | <15 mOhm |
| Insulation resistance | >1 GOhm |

Certificazioni

<https://www.sauro.net/it/prodotto/MSM10001>

MSM10001 - Terminal block

<https://www.sauro.net/it/prodotto/MSM10001>



Distributed by:



IMQ (n.EA022)

| | | | |
|---------------------------------------|---|-------|------|
| Rated voltage | 250 V | | |
| Nominal current | 24 A | | |
| Wire section solid / stranded | 2.5 mm ² / 2.5 mm ² | | |
| Tightening torque | 0.5 Nm | | |
| Insulating category | I | | |
| Overvoltage category/Pollution degree | III/3 | III/2 | II/2 |
| Impulse voltage | 4kV | 4kV | 4kV |
| Rated voltage | 220V | 300V | 600V |
| Insulation voltage | 250V | 320V | 630V |
| Maximum temp usage | 110 | | |

CSA (n.70001182)

| | | | |
|-------------------|------------|--|--|
| Rated voltage | 300 V | | |
| Nominal current | 20 A | | |
| Wire section | 12 AWG | | |
| Tightening torque | 7 lbf x in | | |

CUL (n.E167473)

| | | | |
|------------------------|-----------------|--|--|
| Rated voltage | 300 V | | |
| Nominal current | 17.5 A | | |
| Wire section min ÷ max | 30 AWG ÷ 12 AWG | | |

IEC (n.EN60998)

| | | | |
|---------------------------------------|---|-------|------|
| Rated voltage | 250 V | | |
| Nominal current | 24 A | | |
| Wire section solid / stranded | 2.5 mm ² / 2.5 mm ² | | |
| Tightening torque | 0.5 Nm | | |
| Insulating category | I | | |
| Overvoltage category/Pollution degree | III/3 | III/2 | II/2 |
| Impulse voltage | 4kV | 4kV | 4kV |
| Rated voltage | 220V | 300V | 600V |
| Insulation voltage | 250V | 320V | 630V |
| Maximum temp usage | 110 | | |

UL (n.E167473)

| | | | |
|-----------------|--------|---|-------|
| Usage group | B | C | D* |
| Rated voltage | 300 V | - | 300 V |
| Nominal current | 17.5 A | | |

<https://www.sauro.net/it/prodotto/MSM10001>

MSM10001 - Terminal block



<https://www.sauro.net/it/prodotto/MSM10001>

| | |
|--|-----------------|
| Wire section min ÷ max | 30 AWG ÷ 12 AWG |
| Tightening torque | 7 lbf x in |
| * These limited ratings are applicable to a terminal block for use in or with industrial control equipment whereby the load on any single circuit of the terminal block does not exceed 15A at 51-150V, 10A at 151-300V, or 5A at 301-600V, or the maximum ampere rating, whichever is less. | |

VDE (n.40022741 Reg.-Nr. C517)

| | |
|--------------------|---------------------|
| Rated voltage | 250 V |
| Nominal current | 24 A |
| Wire section | 2.5 mm ² |
| Maximum temp usage | 110 |

Componenti

| | |
|---|--------------------------------|
| Screw material | Nickel-plated copper alloy |
| Terminal contact | Nickel and tin on copper alloy |
| Clamp tightening | Nickel-plated copper alloy |
| Insulating housing material | PA Polyamide |
| Insulating material group | I (CTI \geq 600V) |
| Flammability rating according to UL94 | V0 |
| Glow Wire Flammability Index GWFI according to EN60695-2-12 | 850°C |
| Glow Wire Ignition Temperature GWIT according to EN60695-2-13 | 775°C |

Colori disponibili

| | |
|---------------|---------------------|
| Green | similar to RAL 6032 |
| Dark green | similar to RAL 6017 |
| Black | similar to RAL 9005 |
| Light gray | similar to RAL 7035 |
| Dark gray | similar to RAL 7040 |
| Orange | similar to RAL 2003 |
| Blue | similar to RAL 5012 |
| Brown | similar to RAL 8028 |
| Yellow | similar to RAL 1018 |
| White | similar to RAL 9001 |
| Red | similar to RAL 3017 |
| Another color | on demand |

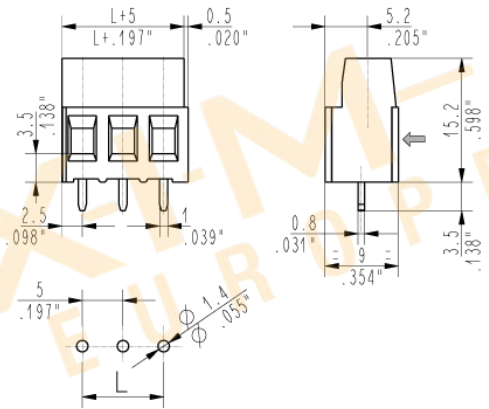
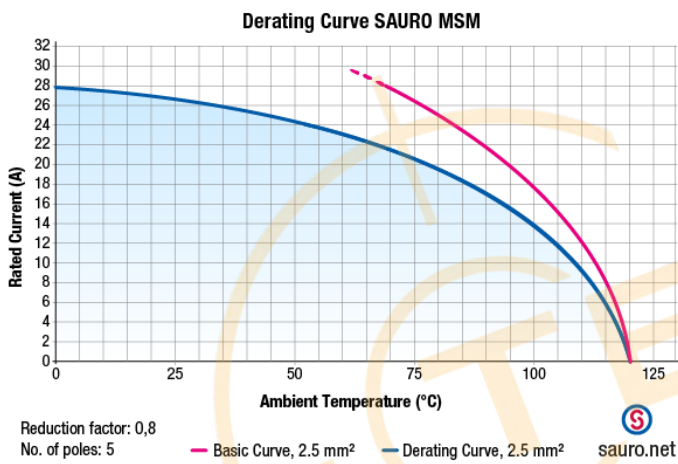
<https://www.sauro.net/it/prodotto/MSM10001>

MSM10001 - Terminal block

<https://www.sauro.net/it/prodotto/MSM10001>



Distributed by:



<https://www.sauro.net/it/prodotto/MSM10001>

Disclaimer

ALL PRODUCTS, PRODUCT SPECIFICATIONS AND DATA ARE SUBJECT TO CHANGE WITHOUT NOTICE TO IMPROVE RELIABILITY, FUNCTION OR DESIGN OR OTHERWISE.

Texim Europe B.V. its affiliates, agents, and employees, and all persons acting on its or their behalf (collectively, "Texim"), disclaim any and all liability for any errors, inaccuracies or incompleteness contained in any datasheet or in any other disclosure relating to any product.

Texim makes no warranty, representation or guarantee regarding the suitability of the products for any particular purpose or the continuing production of any product.

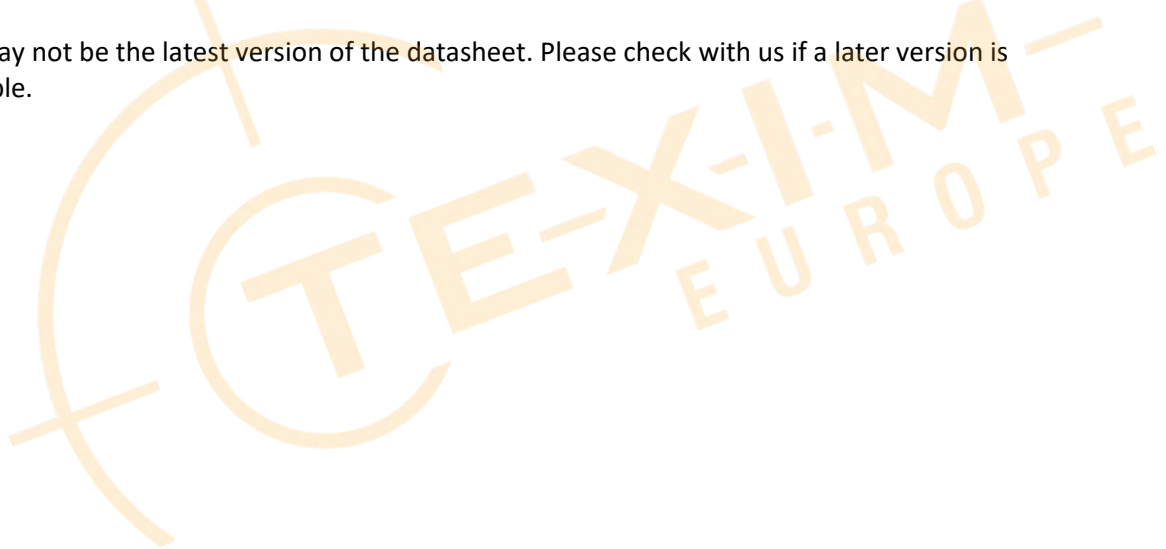
It is the customer's responsibility to validate that a particular product with the properties described in the product specification is suitable for use in a particular application.

Parameters provided in datasheets and / or specifications may vary in different applications and performance may vary over time.

All operating parameters, including typical parameters, must be validated for each customer application by the customer's technical experts.

Please contact us if you have any questions about the contents of the datasheet.

This may not be the latest version of the datasheet. Please check with us if a later version is available.





Headquarters & Warehouse

Elektrostraat 17
 NL-7483 PG Haaksbergen
 The Netherlands

T: +31 (0)53 573 33 33
 E: info@texim-europe.com
 Homepage: www.texim-europe.com



The Netherlands

Elektrostraat 17
 NL-7483 PG Haaksbergen

T: +31 (0)53 573 33 33
 E: nl@texim-europe.com



Belgium

Zuiderlaan 14, box 10
 B-1731 Zellik

T: +32 (0)2 462 01 00
 E: belgium@texim-europe.com



UK & Ireland

St Mary's House, Church Lane
 Carlton Le Moorland
 Lincoln LN5 9HS

T: +44 (0)1522 789 555
 E: uk@texim-europe.com



Germany

Bahnhofstrasse 92
 D-25451 Quickborn

T: +49 (0)4106 627 07-0
 E: germany@texim-europe.com



Germany

Martin-Kollar-Strasse 9
 D-81829 München

T: +49 (0)89 436 086-0
 E: muenchen@texim-europe.com



Austria

Warwitzstrasse 9
 A-5020 Salzburg

T: +43 (0)662 216 026
 E: austria@texim-europe.com



Nordic

Stockholmsgade 45
 2100 Copenhagen

T: +45 88 20 26 30
 E: nordic@texim-europe.com



Italy

Martin-Kollar-Strasse 9
 D-81829 München

T: +49 (0)89 436 086-0
 E: italy@texim-europe.com