

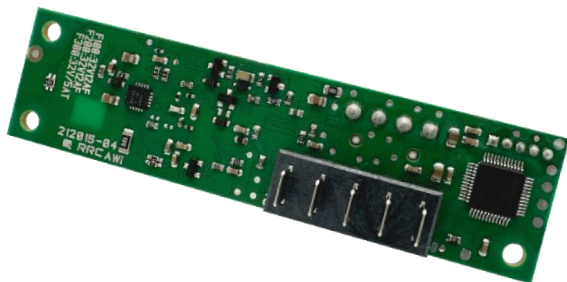
RRC-PMM20

Power Management Module for integration into all applications using RRC20xx batteries

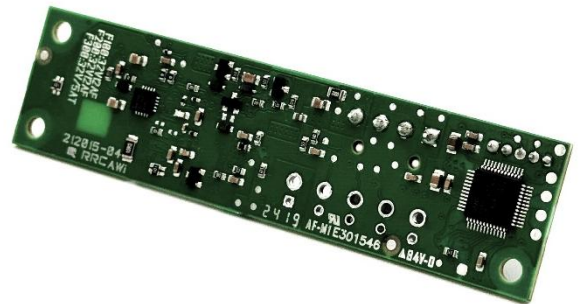
P/N:

110269 (with connector)

110354 (no battery connector)



with connector



Picture only for reference

no battery connector (-NC)



The PMM20 enables internal charging of batteries and facilitates a seamless switch between mains and battery power, ensuring uninterrupted operation and reliable power backup in a space-saving design. Multiple PMMs can be used in parallel inside one device to combine more batteries.

Features & Benefits

- **Easy to design in**
 - Easily integrable into slot design
 - Integrated 180° battery connector for different connection options
 - Maximum flexibility: Various mounting options
 - Small footprint & slim design to not waste space within the application
 - wide DC input voltage range to perfectly match the application's needs
- **Plug & Play available embedded charging solution for RRC standard battery packs**
 - Time to market: no development time, immediate product availability
 - No NRE: no additional development, approvals, or design costs
 - Low total cost of ownership
- **Power management functionality**
 - Seamless switch between mains and battery power
 - Up to 40W charging power in power supply mode
- **Fully compliant with Smart Battery Specification**
 - SMBus communication with battery and host
- **Worldwide certified for industrial and medical applications**
- **Configurable**
 - Programmable limits for input current, charging current and charging voltage
 - Status signal can directly drive a LED

Characteristics

Input (Power Supply Output)

Input voltage range	7.50V – 24.00V, min. Battery charge voltage +1.00V
Input power	240.00W max.
Input current	10.00A max.
Input fuse	12A
Protection	Reverse polarity, short current

Application Output

Output voltage range	Equal to DC input voltage if external DC power supply is present. Equal to battery voltage if no external DC power supply is present.
Total output power	168.00W max. in battery mode 160.00W max. in power supply mode
Output current	10.00A max.
Output fuse	12A

Power Management

Automatic power source selection with seamless transition between ext. DC power supply and battery
--

Battery Input / Output

Battery charge voltage	Up to 17.40V
Battery charge current	Up to 3.60A
Battery charge power	Up to 40.00W
Battery discharge current	10.00A max.
Protection	Battery short circuit, over-temperature, over-voltage, over-current & reverse polarity
Standby current	300µA

Environmental Condition

Operating Temperature	-20° to 60°C
Transport & Storage Temperature	-20° to 60°C
Relative Humidity	5% - 95% non-condensing
Altitude	5000m for operation and storage

Recommended Voltage for External AC/DC Power Supplies

Battery architecture	1SxP	2SxP	3SxP	4SxP
DC input voltage	7.50VDC	12.00VDC	15.00VDC	19.00VDC
Power supply wattage @ 4.00A max input current	≥30.00W	≥48.00W	≥64.00W	≥80.00W
Power supply wattage @ 8.00A max input current	≥60.00W	≥96.00W	≥128.00W	≥160.00W

Regulatory Approvals

International	Test report and certificate acc. IEC62368-1
Europe	CE, UKCA (EMC)
USA	FCC (EMC)
Environmental	RoHS REACH WEEE

Mechanical Details	
Board dimensions (LxWxH)	~87mm x 22.40mm, without cables and connectors With three mounting holes
Weight	See below
Battery Connector	See below
Input/Output Connector	1x 90° / 4pin JST style header on PCBA
Communication Interface	90° / 5pin JST style header on PCBA with 2xSMBus lines, GND and 2xGPIO

Version Differences	RRC-PMM20	RRC-PMM20-NC
Product Number	110269	110354
Weight	~16g	~14g
Battery Connector	1x battery pack accessible via 180° mating connector for RRC20xx batteries	no battery connector
Regulatory Approvals	All above and additional ANSI/AAMI ES60601-1:2005 + A1:2012 + A2:2010	All above

To facilitate a fast design-in process for developers, RRC provides 3D data and detailed specifications of the power management module RRC-PMM20 and RRC smart batteries. For an application note related to the power management module with additional details, contact your RRC representative. For further information on the RRC smart batteries, please refer to the RRC website (www.rrc-ps.com).



Germany/HQ

RRC power solutions GmbH

Technologiepark 1
66424 Homburg / Saar

+49 6841 98090
sales@rrc-ps.com

USA

RRC power solutions Inc.

18340 Yorba Linda Blvd.,
Suite 107-437
Yorba Linda, CA 92886

+1 714 777 3604
usa@rrc-ps.com

Hong Kong

RRC power solutions Ltd.

S-V,6/F, Valiant Industrial
Centre 2-12
Au Pui Wan Street
Fo Tan, N.T., Hong Kong

+852 2376 0106
hkrrc@rrc-ps.cn

China

RRC power solutions Ltd.

Room 1306, C Building,
Tianan International Building,
Renmin South Road,
Luohu District, Shenzhen
518021

+86 755 8374 1908
hkrrc@rrc-ps.cn

Vietnam

RRC POWER SOLUTIONS
COMPANY LIMITED

Block C, Lot CN4
Dinh Vu – Cat Hai
Economic Zone,
Dong Hai 2 Ward
Hai An District 180000
Hai Phong City

vietnam@rrc-ps.com

Disclaimer

ALL PRODUCTS, PRODUCT SPECIFICATIONS AND DATA ARE SUBJECT TO CHANGE WITHOUT NOTICE TO IMPROVE RELIABILITY, FUNCTION OR DESIGN OR OTHERWISE.

Texim Europe B.V. its affiliates, agents, and employees, and all persons acting on its or their behalf (collectively, "Texim"), disclaim any and all liability for any errors, inaccuracies or incompleteness contained in any datasheet or in any other disclosure relating to any product.

Texim makes no warranty, representation or guarantee regarding the suitability of the products for any particular purpose or the continuing production of any product.

It is the customer's responsibility to validate that a particular product with the properties described in the product specification is suitable for use in a particular application.

Parameters provided in datasheets and / or specifications may vary in different applications and performance may vary over time.

All operating parameters, including typical parameters, must be validated for each customer application by the customer's technical experts.

Please contact us if you have any questions about the contents of the datasheet.

This may not be the latest version of the datasheet. Please check with us if a later version is available.





Headquarters & Warehouse

Elektrostraat 17
NL-7483 PG Haaksbergen
The Netherlands

T: +31 (0)53 573 33 33
E: info@texim-europe.com
Homepage: www.texim-europe.com



The Netherlands

Elektrostraat 17
NL-7483 PG Haaksbergen

T: +31 (0)53 573 33 33
E: nl@texim-europe.com



Belgium

Zuiderlaan 14, box 10
B-1731 Zellik

T: +32 (0)2 462 01 00
E: belgium@texim-europe.com



UK & Ireland

St Mary's House, Church Lane
Carlton Le Moorland
Lincoln LN5 9HS

T: +44 (0)1522 789 555
E: uk@texim-europe.com



Germany

Bahnhofstrasse 92
D-25451 Quickborn

T: +49 (0)4106 627 07-0
E: germany@texim-europe.com



Germany

Martin-Kollar-Strasse 9
D-81829 München

T: +49 (0)89 436 086-0
E: muenchen@texim-europe.com



Austria

Martin-Kollar-Strasse 9
D-81829 München

T: +49 (0)89 436 086-0
E: austria@texim-europe.com



Nordic

Stockholmsgade 45
2100 Copenhagen

T: +45 88 20 26 30
E: nordic@texim-europe.com



Italy

Martin-Kollar-Strasse 9
D-81829 München

T: +49 (0)89 436 086-0
E: italy@texim-europe.com