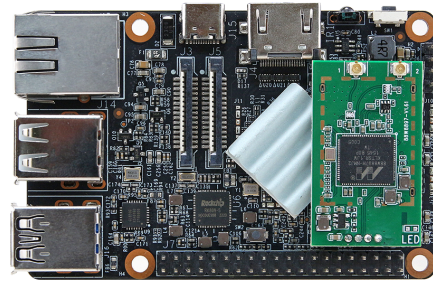




ACP-3566-PI

1.8" SBC, the Alternative of Raspberry Pi with a long lifecycle guarantee



Product Features

- Rockchip RK3566 with Quad-core Cortex-A55 up to 1.8GHz, 4GB RAM and onboard 32 GB eMMC
- Support 40P GPIO and can be configured as rich expansion interfaces such as RS232, GPIO, SPI and I2C. It also built-in Gigabit Ethernet port, supports Wi-Fi
- Long life cycle guarantee and sufficient supply
- Support HDMI 4K output display, MIPI-DSI and MIPI-CSI video input and output
- Small Size 85 mm * 55 mm

Specification

System Information

Processor RockChip RK3566 Quad-core Cortex-A55

System Memory 4 GB

Software Support

OS Linux Debian 10

AI SDK GitHub <https://github.com/Avalue-Technology/repositories.directory>

Storage

Storage onboard 32 GB eMMC

Power Requirement

DC Input DC 5V / 3A via USB-C

Certification

Certification Information CE, FCC Class B

Distributed by www.texim-europe.com

I/O

External I/O Connector	1 x 10/100/1000 RJ45 Powered LAN 1 x HDMI 2.0 Out 2 x USB Host 2.0 1 x USB OTG 2.0 1 x USB Host 3.0 1 x micro SD memory card slot (max 64 GB)
-------------------------------	--

Internal I/O Connector	40 x GPIO pin header, GPIO, UART, I2C, SPI 1 x WIFI 802.11 a/b/g/n/ac 1 x MIPI CSI 1 x MIPI DSI
-------------------------------	--

Mechanical & Environmental

Operating Temp.	0 ~ 60°C (32 ~ 140°F)
------------------------	-----------------------

Storage Temp.	-40°C ~ 75°C (-40°F ~ 167°F)
----------------------	------------------------------

Dimension (L x W)	85 x 55 mm
--------------------------	------------

Weight	0.16 kg
---------------	---------

Ordering Information

Ordering Information	ACP-3566-PI-A1-1R
-----------------------------	-------------------



Disclaimer

ALL PRODUCTS, PRODUCT SPECIFICATIONS AND DATA ARE SUBJECT TO CHANGE WITHOUT NOTICE TO IMPROVE RELIABILITY, FUNCTION OR DESIGN OR OTHERWISE.

Texim Europe B.V. its affiliates, agents, and employees, and all persons acting on its or their behalf (collectively, "Texim"), disclaim any and all liability for any errors, inaccuracies or incompleteness contained in any datasheet or in any other disclosure relating to any product.

Texim makes no warranty, representation or guarantee regarding the suitability of the products for any particular purpose or the continuing production of any product.

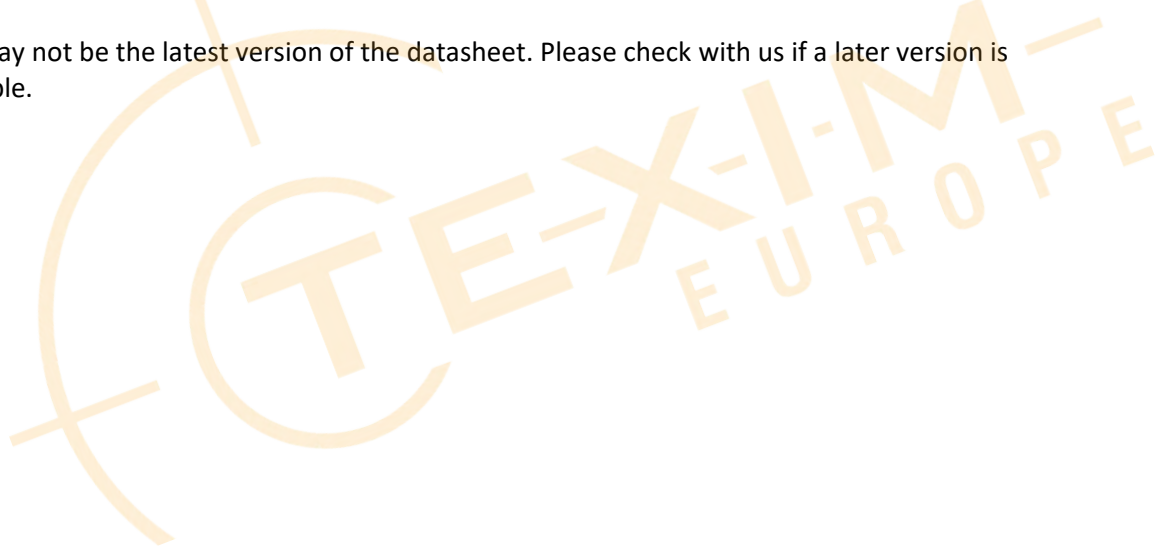
It is the customer's responsibility to validate that a particular product with the properties described in the product specification is suitable for use in a particular application.

Parameters provided in datasheets and / or specifications may vary in different applications and performance may vary over time.

All operating parameters, including typical parameters, must be validated for each customer application by the customer's technical experts.

Please contact us if you have any questions about the contents of the datasheet.

This may not be the latest version of the datasheet. Please check with us if a later version is available.





Headquarters & Warehouse

Elektrostraat 17
 NL-7483 PG Haaksbergen
 The Netherlands

T: +31 (0)53 573 33 33
 E: info@texim-europe.com
 Homepage: www.texim-europe.com



The Netherlands

Elektrostraat 17
 NL-7483 PG Haaksbergen

T: +31 (0)53 573 33 33
 E: nl@texim-europe.com



Belgium

Zuiderlaan 14, box 10
 B-1731 Zellik

T: +32 (0)2 462 01 00
 E: belgium@texim-europe.com



UK & Ireland

St Mary's House, Church Lane
 Carlton Le Moorland
 Lincoln LN5 9HS

T: +44 (0)1522 789 555
 E: uk@texim-europe.com



Germany

Bahnhofstrasse 92
 D-25451 Quickborn

T: +49 (0)4106 627 07-0
 E: germany@texim-europe.com



Germany

Martin-Kollar-Strasse 9
 D-81829 München

T: +49 (0)89 436 086-0
 E: muenchen@texim-europe.com



Austria

Warwitzstrasse 9
 A-5020 Salzburg

T: +43 (0)662 216 026
 E: austria@texim-europe.com



Nordic

Stockholmsgade 45
 2100 Copenhagen

T: +45 88 20 26 30
 E: nordic@texim-europe.com



Italy

Martin-Kollar-Strasse 9
 D-81829 München

T: +49 (0)89 436 086-0
 E: italy@texim-europe.com