

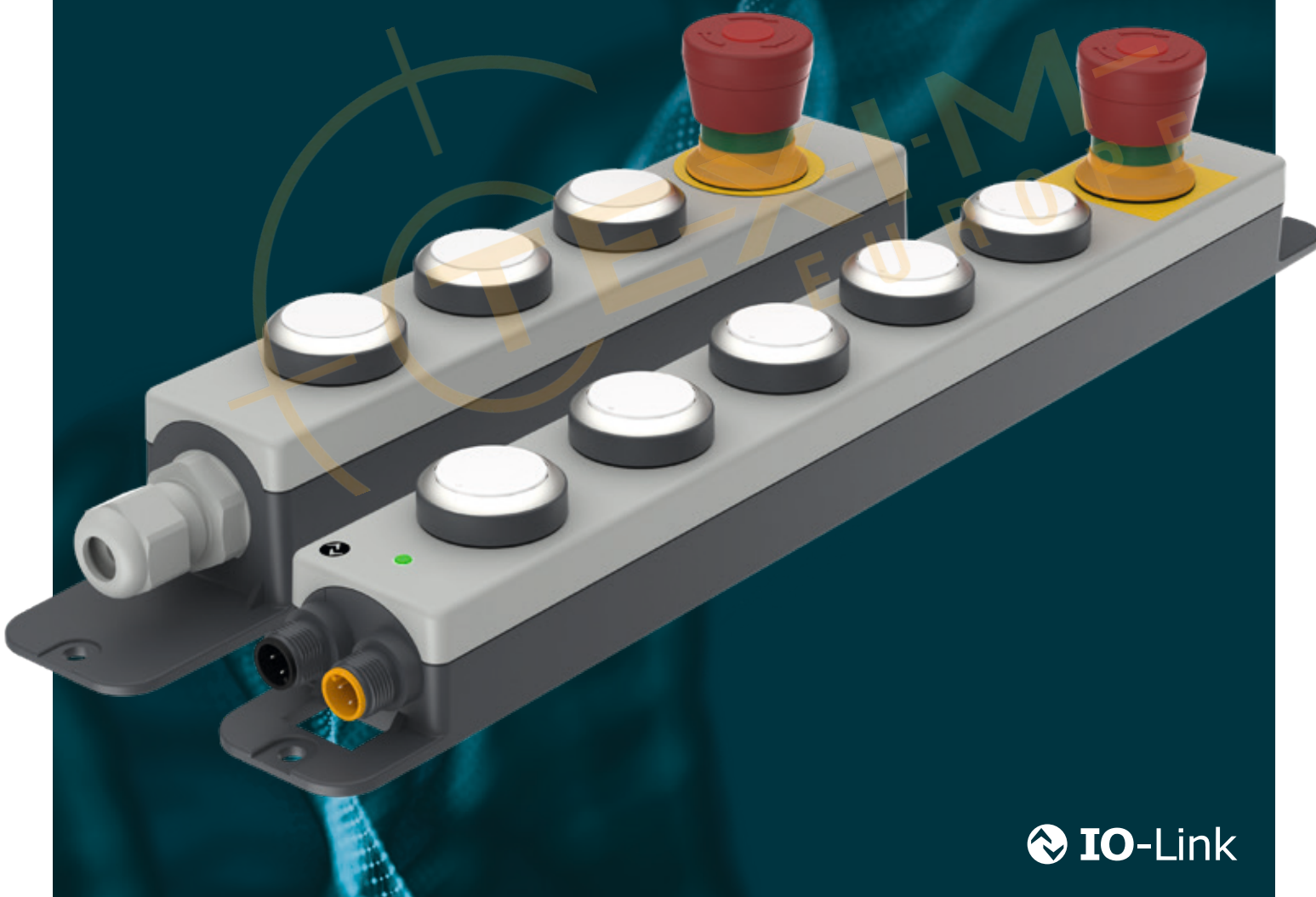
Distributed by:



NEW

E-BOX XL

EXTRA SLIM HOUSING CONCEPT



 **IO-Link**

E-BOX XL







FOR THE EXTRA OPERATING FUNCTIONS

RAFI has created something big with the new E-BOX XL. A housing concept with up to 6 operating elements is now available to match the proven E-BOX in terms of appearance and function. A distinction is made between the E-BOX XL MODULAR and the E-BOX XL IO-LINK.





With the E-BOX XL MODULAR, the individual actuators can be combined individually - mounting and wiring is done manually. With the E-BOX XL IO-LINK, pre-configured variants can be ordered, which are simply connected to the master port via Plug&Play.

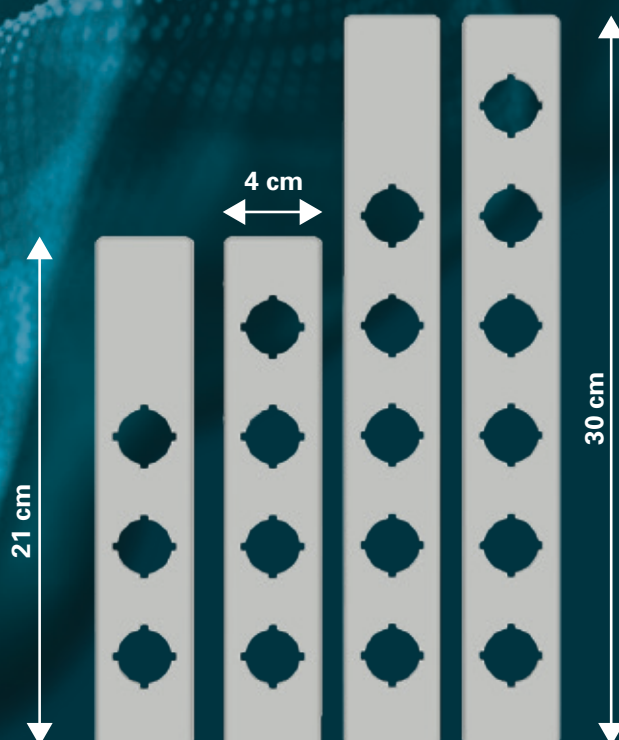
ADVANTAGES



-  Different housing lengths for 3 to 6 actuators
-  Slim housing design, matching the 40 mm aluminium profile
-  Simple screw mounting for any installation position
-  Advantage of the IO-Link variant: Only 1 port on the master is required for up to 6 illuminated pushbuttons
-  IO-Link parameterisation (RGB lighting, monitoring of switching cycles, sound modes)
-  Optional M12 input / output for connecting additional sensors and actuators

KEY FACTS

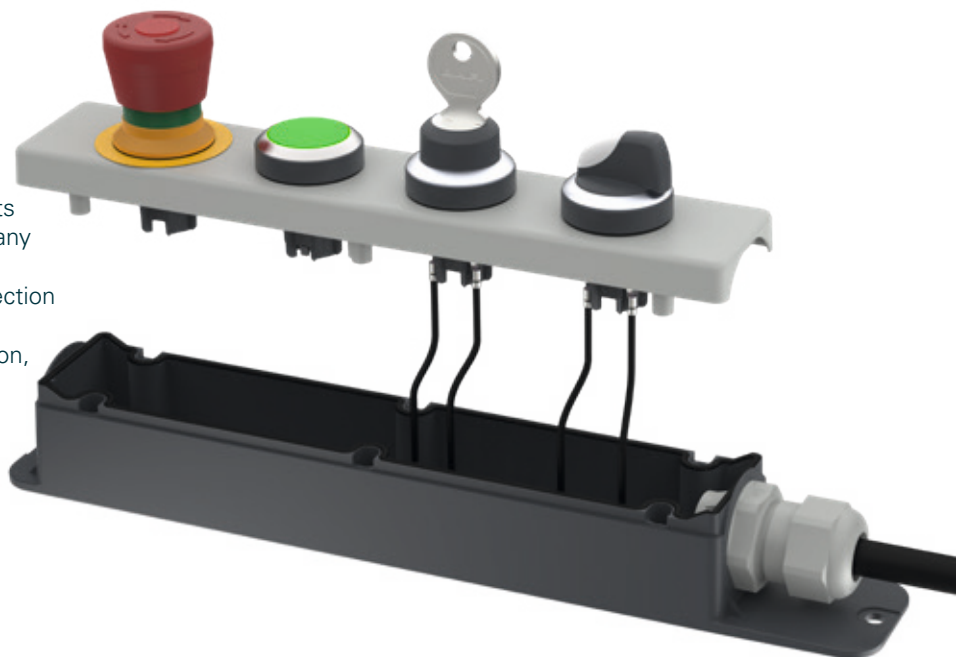
-  Operation temperature:
MODULAR: -25 °C to +70 °C
IO-LINK: -30 °C to +60 °C
-  Protection class according to DIN EN 60529: IP 65
-  Certificates: CE, UL
-  Pushbuttons can be labelled as required (FLEXLAB)



E-BOX XL MODULAR

BUILD YOUR OWN BOX

- Individually configurable and combinable
- Use of RAFIX 22 FS+ actuating elements and RAFIX QC switching elements for any installation point
- Manual cabling with cable screw connection (Ø 7-13mm clamping range)
- Scope of delivery: Lower housing section, upper housing section, cable gland and emergency stop adhesive label
- Actuators, switching elements, LED clips and flat connector sleeves must be purchased separately



E-BOX XL IO-LINK

WE CONNECT HUMANS WITH IO-LINK

- 1x M12 for IO-Link (black)
- 1x M12 for emergency stop safety function (yellow)
- Predefined, ready-made standard variants
- Optional: 1x M12 socket for connecting additional sensors & actuators to M12 master port

IO-LINK PORT

- Version 1.1.4
- Connection to IO-Link master (COM 2)
- M12 4-pin, A-coded
- Parameter data (lighting, flashing, night mode, volume and sound modes)
- Diagnostic data (temperature, monitoring of switching cycles)

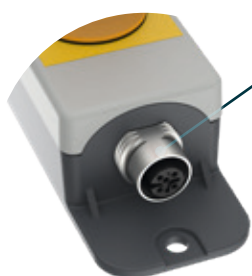
E-STOP PORT

- Connection to PLC / safety controller M12 5-pin, A-coded according to AIDA
- Normally closed contacts potential-free
- Normally open contact is transmitted via IO-Link



M12 SOCKET FOR INPUT / OUTPUT SIGNALS (IO)

- Integration of RAFI products such as RAMO, E-BOX, TILTED DIAMOND and various other sensors and actuators possible (SIO mode)
- M12 4-pin, A-coded
- Digital in / Digital out 24 V / 0 V switchable, max. 200 mA per digital output



Distributed by:



VARIANTS

E-BOX XL MODULAR

Article number	Variant
1.20.810.530/0000	Housing, 3 installation points 22.3 mm, M20 cable screw connection
1.20.810.540/0000	Housing, 4 installation points 22.3 mm, M20 cable screw connection
1.20.810.550/0000	Housing, 5 installation points 22.3 mm, M20 cable screw connection
1.20.810.560/0000	Housing, 6 installation points 22.3 mm, M20 cable screw connection

E-BOX XL IO-LINK

3 ACTUATORS

Article number	Variant
1.24.300.001/0000	3 Illuminated pushbutton 1NO LED RGB
1.24.310.001/0000	3 Illuminated pushbutton 1NO LED RGB / IO
1.24.303.001/0000	2 Illuminated pushbutton 1NO LED RGB / 1 e-stop 2NC
1.24.313.001/0000	2 Illuminated pushbutton 1NO LED RGB / 1 e-stop 2NC / IO

4 ACTUATORS

Article number	Variant
1.24.400.001/0000	4 Illuminated pushbutton 1NO LED RGB
1.24.410.001/0000	4 Illuminated pushbutton 1NO LED RGB / IO
1.24.403.001/0000	3 Illuminated pushbutton 1NO LED RGB / 1 e-stop 2NC
1.24.413.001/0000	3 Illuminated pushbutton 1NO LED RGB / 1 e-stop 2NC / IO

5 ACTUATORS

Article number	Variant
1.24.500.001/0000	5 Illuminated pushbutton 1NO LED RGB
1.24.510.001/0000	5 Illuminated pushbutton 1NO LED RGB / IO
1.24.503.001/0000	4 Illuminated pushbutton 1NO LED RGB / 1 e-stop 2NC
1.24.513.001/0000	4 Illuminated pushbutton 1NO LED RGB / 1 e-stop 2NC / IO

6 ACTUATORS

Article number	Variant
1.24.600.001/0000	6 Illuminated pushbutton 1NO LED RGB
1.24.610.001/0000	6 Illuminated pushbutton 1NO LED RGB / IO
1.24.603.001/0000	5 Illuminated pushbutton 1NO LED RGB / 1 e-stop 2NC
1.24.613.001/0000	5 Illuminated pushbutton 1NO LED RGB / 1 e-stop 2NC / IO
1.24.613.002/0000	3 Illuminated pushbutton 1NO LED RGB / 1 selector switch 2x60° latching 2NO / 1 buzzer / 1 e-stop 2NC / IO



Technical data and further information on all products can be found at:
ecatalog.rafi-group.com

The information in this brochure contains general descriptions and performance characteristics which may not apply exactly in the specific application and/or which can change due to further development of the products. The technical data, images and other details of our products are merely the results of individual technical tests. These and other performance characteristics are only binding when they are expressly agreed upon conclusion of the contract.

Otherwise, the following applies:

We reserve the right to change delivery options and technical details. Products are similar to the illustrations and other forms of representation. All product designations can be brands or product names of the RAFI Group or other suppliers whose use by third parties for their own purposes may violate the owner's rights.

RAFI GmbH & Co. KG

A RAFI Group company
 Ravensburger Str. 128–134, 88276 Berg, Germany
 P +49 751 89-0, F +49 751 89-1300
rafi-group.com, info.headquarters@rafi-group.com

RAFI

Disclaimer

ALL PRODUCTS, PRODUCT SPECIFICATIONS AND DATA ARE SUBJECT TO CHANGE WITHOUT NOTICE TO IMPROVE RELIABILITY, FUNCTION OR DESIGN OR OTHERWISE.

Texim Europe B.V. its affiliates, agents, and employees, and all persons acting on its or their behalf (collectively, "Texim"), disclaim any and all liability for any errors, inaccuracies or incompleteness contained in any datasheet or in any other disclosure relating to any product.

Texim makes no warranty, representation or guarantee regarding the suitability of the products for any particular purpose or the continuing production of any product.

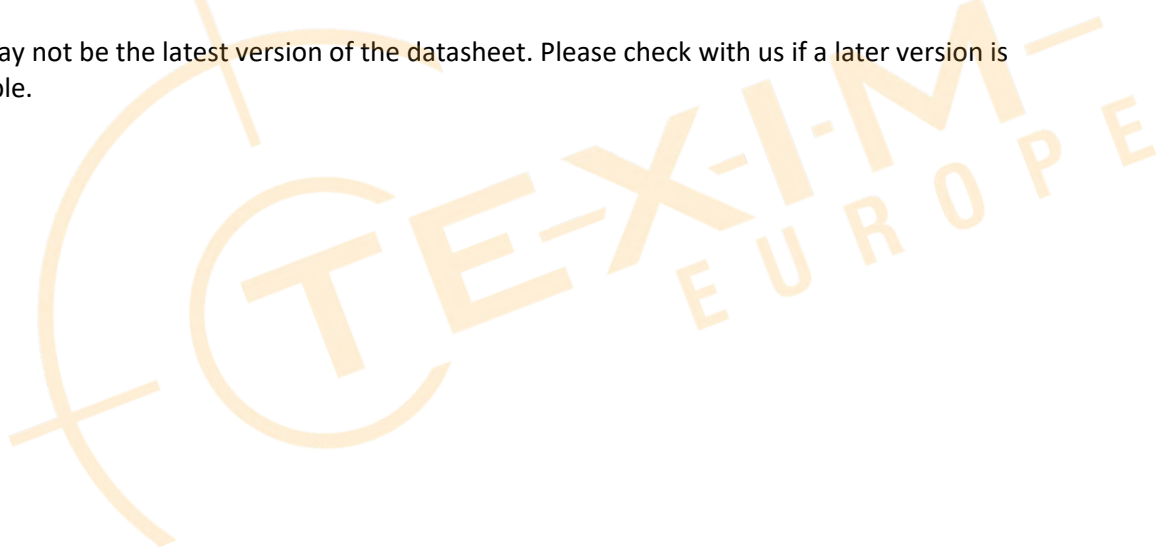
It is the customer's responsibility to validate that a particular product with the properties described in the product specification is suitable for use in a particular application.

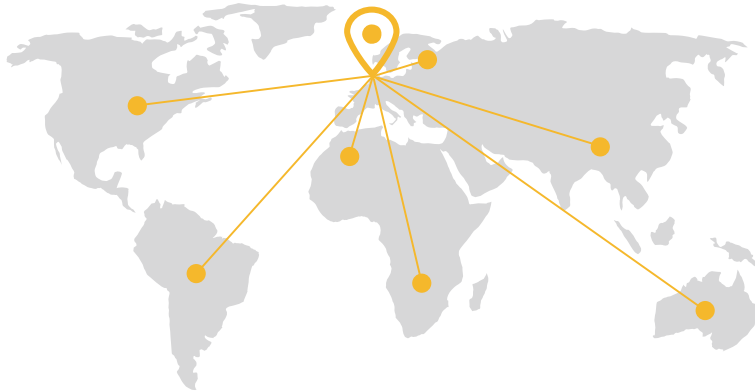
Parameters provided in datasheets and / or specifications may vary in different applications and performance may vary over time.

All operating parameters, including typical parameters, must be validated for each customer application by the customer's technical experts.

Please contact us if you have any questions about the contents of the datasheet.

This may not be the latest version of the datasheet. Please check with us if a later version is available.





Headquarters & Warehouse

Elektrostraat 17
NL-7483 PG Haaksbergen
The Netherlands

T: +31 (0)53 573 33 33
E: info@texim-europe.com
Homepage: www.texim-europe.com



The Netherlands

Elektrostraat 17
NL-7483 PG Haaksbergen

T: +31 (0)53 573 33 33
E: nl@texim-europe.com



Belgium

Zuiderlaan 14, box 10
B-1731 Zellik

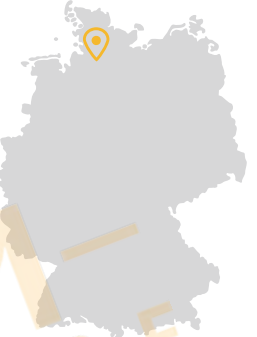
T: +32 (0)2 462 01 00
E: belgium@texim-europe.com



UK & Ireland

St Mary's House, Church Lane
Carlton Le Moorland
Lincoln LN5 9HS

T: +44 (0)1522 789 555
E: uk@texim-europe.com



Germany

Bahnhofstrasse 92
D-25451 Quickborn

T: +49 (0)4106 627 07-0
E: germany@texim-europe.com



Germany

Martin-Kollar-Strasse 9
D-81829 München

T: +49 (0)89 436 086-0
E: muenchen@texim-europe.com



Austria

Warwitzstrasse 9
A-5020 Salzburg

T: +43 (0)662 216 026
E: austria@texim-europe.com



Nordic

Stockholmsgade 45
2100 Copenhagen

T: +45 88 20 26 30
E: nordic@texim-europe.com



Italy

Martin-Kollar-Strasse 9
D-81829 München

T: +49 (0)89 436 086-0
E: italy@texim-europe.com