

# Shenzhen Leadtek Electronics Co.,Ltd

## PRODUCT SPECIFICATION

### TFT-LCD MODULE

Module No. **CT19-V0**

☒ Preliminary

☐ Approval S

Distributed by:



Designed by	Checked by	Approved by
<i>jona</i>	<i>tom</i>	<i>lan</i>

### Final Approval by Customer

Approved by	Comment

Distributed by:



※The specification of "TBD" should refer to the measured value of sample . If there is difference between the design specification and measured value, we naturally shall negotiate and agree to solution with customer.



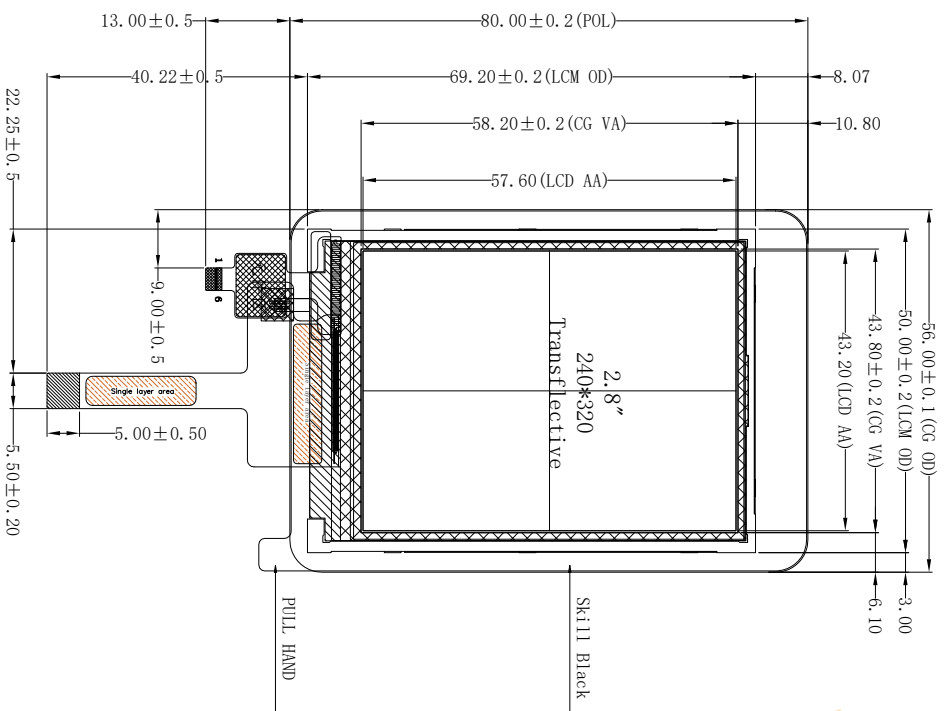
## 2. General Description

NO	Item	Specification	Unit
1	LCD Size	TFT"2.8	inch
2	Panel Type	IPS	mm
3	Display Resolution	240 x RGB x 320	pixel
4	Display Mode	Normally Black	-
5	Viewing Direction	60/60/60/60	-
6	CTP+LCM Module size	56.00(W)×80.00(H)×3.69(T)	mm
7	Active Area	43.20(W)×57.60(H)	mm
8	Pixel Pitch	0.18(H) x 0.18 (V)	mm
9	LCM Driver	-	
10	Light Source	White LED	
11	LCM Interface	4Line-SPI	bit

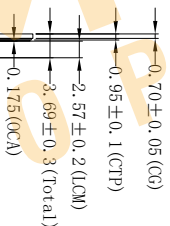
Note : Please refer to the mechanical drawing

## 3 .EXTE RNAL DIMENSIONS

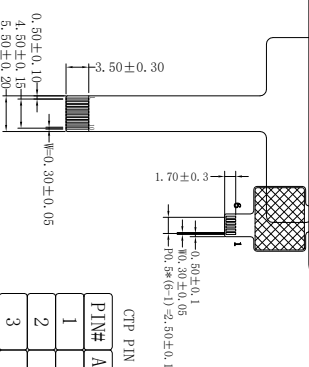
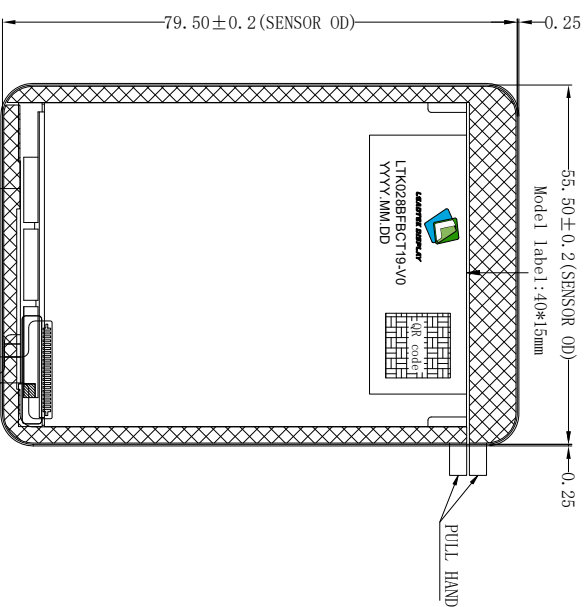
# Front View



# Side View



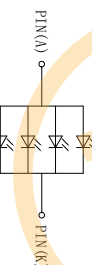
# Back View



CTP PIN DESCRIPTION			TFT PIN DESCRIPTION		
PIN#	Assignment		1	LEDA	
1	VCC-TP		2	LEDK	
2	GND		3	VCC2.8	
3	SCL		4	TE	
4	SDA		5	NRESET	
5	INT		6	CS	
6	RST		7	WRX	
			8	DCX	
			9	SDA	
			10	GND	

- Notes:
- Display : 2.8", TFT
  - Resolution: 240xRGBx320
  - LCD Viewing Direction: 60/60/60/60
  - Display Mode: Normally Black
  - LCM+CTP Brightness: 45cd/m<sup>2</sup> (TYP)
  - unmark Tolerance: ±0.2
  - OPERATING TEMP: -20° C ~ +70° C
  - STORAGE TEMP: -30° C ~ +80° C
  - Requirements on Environmental Protection: ROHS
- CTP technical parameters:
- Structure: G+F
  - Working voltage: 2.8-3.3 V IO voltage: 1.8V
  - IC: FT6336U
  - Transmittance: ≥ 85%
  - Surface hardness: 6H
  - Working environment: -20°C ~ +70°C, ≤ 90%RH
  - Storage environment: -30°C ~ +80°C, ≤ 90%RH
  - The unmarked dimensional tolerance shall be ± 0.2mm

IF=40mA, VF=3.0V (TYP)



**Shenzhen Leadtek Electronics Co., Ltd**

SCALE: 1/1 UNIT: mm PAGE: 1/1

Part No: LTK028BFBCT19-V0 VER: V0

Customer No: Kevin JONA IAN

DATE: 2025.1.13 NAME: IAN



## 4. 0 Pin Assignment

### 4.1. PIN Description

Pin No.	Symbol	Description
1	LEDA	Power supply for backlight anode input terminal.
2	LEDK	Power supply for backlight cathode input terminal.
3	VCC2.8	Power Supply(Analog). VCI=2.8V-3.3V
4	TE	Serves TE (Tearing Effect ) pin on MPU interface.
5	NRESET	Reset signal(low active)
6	CS	Chip select pin
7	SCL(WRX)	Servers as SCL (Serial Clock)
8	A0(DCX)	Data or command select pin
9	SDA	Serial data input pin
10	GND	Power Ground



## 5. DRIVER ELECTRICAL CHARACTERISTICS

### 5.1 Absolute Operation Range

If the operating condition exceeds the following absolute maximum ratings, the TFT LCD module may be damaged permanently.

Item	Symbol	Values			Unit
		Min.	Typ	Max.	
Supply Voltage for Analog	VCC	-0.3	-	3.3	V
Supply Voltage for Digital	IOVCC	-0.3	-	3.3	V
Operating Temperature	TOP	-20	-	+70	°C
Storage Temperature	TSP	-30	-	+80	°C

## 6.DC Characteristics

Item	Symbol	Condition	Values			Unit	Remark
			Min.	Typ.	Max.		
Supply Voltage for Analog	VCC	-	2.4	3.0	3.3	V	
Supply Voltage for Digital	IOVCC	-	1.65	3.0	3.3	V	
Input High Voltage	V <sub>IH</sub>	-	0.7*IOVCC	-	IOVCC	V	
Input Low Voltage	V <sub>IL</sub>	-	0	-	0.3*IOVCC	V	
Output High Voltage	V <sub>OH</sub>	-	0.8*IOVCC	-	IOVCC	V	
Output Low Voltage	V <sub>OL</sub>	-	0	-	0.2*IOVCC	V	

**Table 1 Absolute Operation Range**

*Note: If one of the above items is exceeded its maximum limitation momentarily, the quality of the product may be degraded.*

*Absolute maximum limitation, therefore, specify the values exceeding which the product may be physically damaged. Be sure to use the product within the recommend range.*

### 6.1 Backlight Characteristics

Ta = 25°C

Item	Symbol	MIN	TYP	MAX	UNIT	Test Condition
Supply Voltage	V <sub>f</sub>	2.8	3.0	3.3	V	I <sub>f</sub> =40mA
Supply Current	I <sub>f</sub>	-	40	-	mA	-
Luminous Intensity for LCM+CTP	-	-	45	-	Cd/m <sup>2</sup>	I <sub>f</sub> =40mA
Life Time	-	30000	-	-	Hr	I <sub>f</sub> =40mA
Backlight Color	White					

## 7. Serial Interface Characteristics (4-line serial):

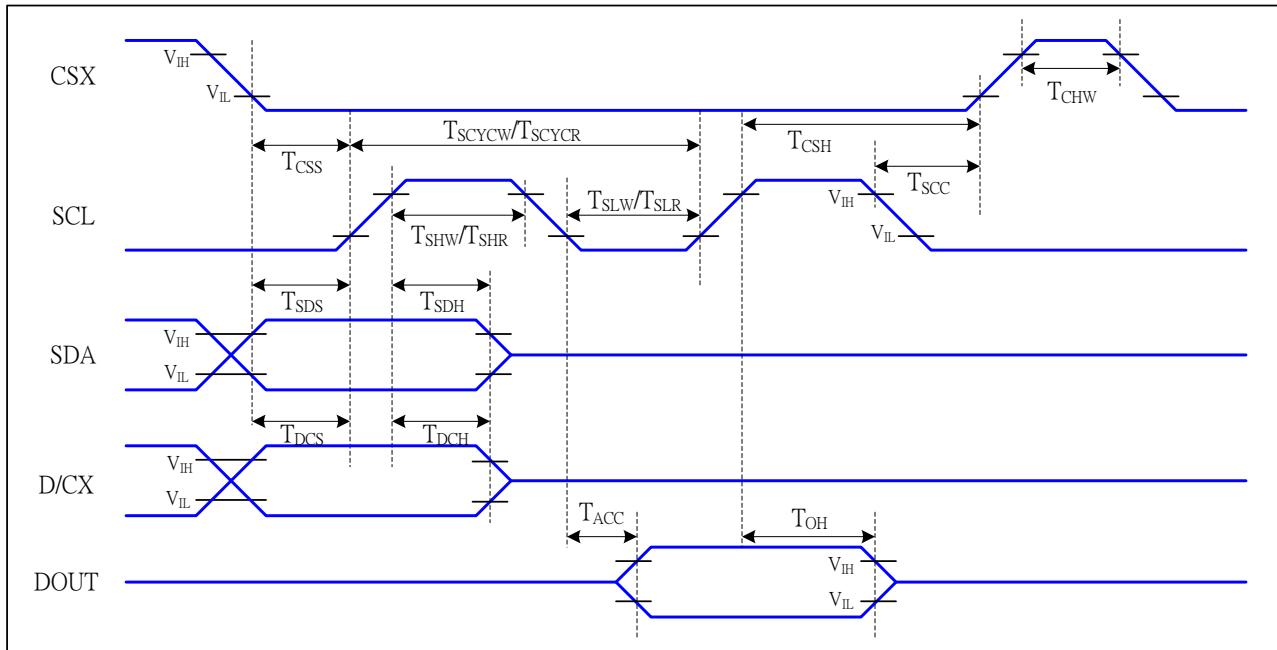


Figure 5 4-line serial Interface Timing Characteristics

$V_{DDI}=1.65$  to  $3.3V$ ,  $V_{DD}=2.4$  to  $3.3V$ ,  $AGND=DGND=0V$ ,  $T_a=25^{\circ}C$

Signal	Symbol	Parameter	MIN	MAX	Unit	Description
CSX	$T_{CSS}$	Chip select setup time (write)	15		ns	
	$T_{CSH}$	Chip select hold time (write)	15		ns	
	$T_{CSS}$	Chip select setup time (read)	60		ns	
	$T_{SCC}$	Chip select hold time (read)	65		ns	
	$T_{CHW}$	Chip select "H" pulse width	40		ns	
SCL	$T_{SCYCW}$	Serial clock cycle (Write)	16		ns	-write command & data ram
	$T_{SHW}$	SCL "H" pulse width (Write)	7		ns	
	$T_{SLW}$	SCL "L" pulse width (Write)	7		ns	
	$T_{SCYCR}$	Serial clock cycle (Read)	150		ns	-read command & data ram
	$T_{SHR}$	SCL "H" pulse width (Read)	60		ns	
	$T_{SLR}$	SCL "L" pulse width (Read)	60		ns	
D/CX	$T_{DCS}$	D/CX setup time	10		ns	
	$T_{DCH}$	D/CX hold time	10		ns	
SDA (DIN)	$T_{SDS}$	Data setup time	7		ns	
	$T_{SDH}$	Data hold time	7		ns	
DOUT	$T_{ACC}$	Access time	10	50	ns	For maximum $CL=30pF$
	$T_{OH}$	Output disable time	15	50	ns	For minimum $CL=8pF$

## 7.1 Reset Timing:

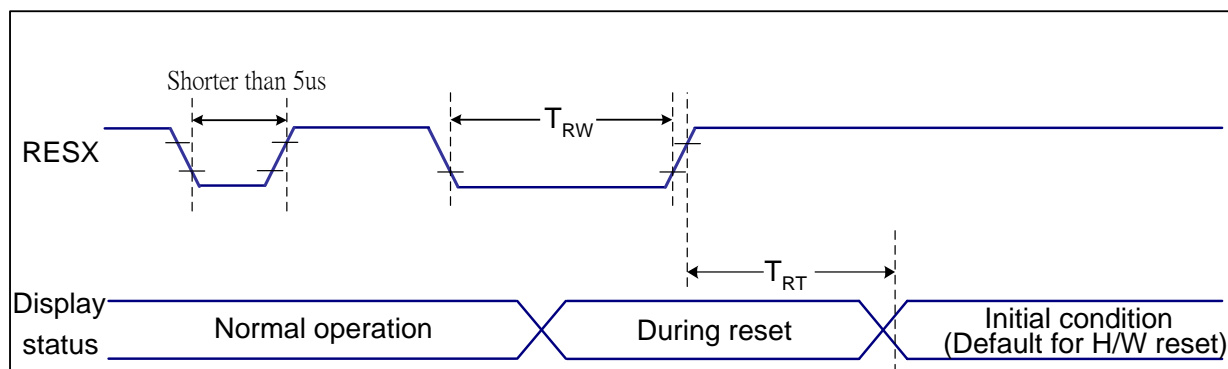


Figure 7 Reset Timing

$V_{DDI}=1.65$  to  $3.3V$ ,  $V_{DD}=2.4$  to  $3.3V$ ,  $AGND=DGND=0V$ ,  $T_a=25^{\circ}C$

Related Pins	Symbol	Parameter	MIN	MAX	Unit
RESX	TRW	Reset pulse duration	10	-	us
	TRT	Reset cancel	-	5 (Note 1, 5)	ms
				120 (Note 1, 6, 7)	ms

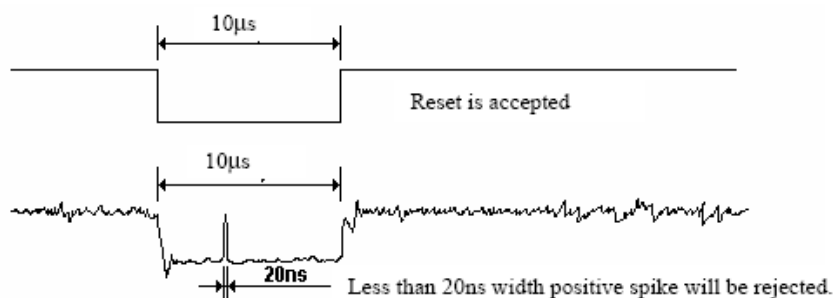
Table 9 Reset Timing

Notes:

1. The reset cancel includes also required time for loading ID bytes, VCOM setting and other settings from NVM (or similar device) to registers. This loading is done every time when there is HW reset cancel time ( $t_{RT}$ ) within 5 ms after a rising edge of RESX.
2. Spike due to an electrostatic discharge on RESX line does not cause irregular system reset according to the table below:

RESX Pulse	Action
Shorter than 5us	Reset Rejected
Longer than 9us	Reset
Between 5us and 9us	Reset starts

3. During the Resetting period, the display will be blanked (The display is entering blanking sequence, which maximum time is 120 ms, when Reset Starts in Sleep Out –mode. The display remains the blank state in Sleep In –mode.) and then return to Default condition for Hardware Reset.



5. When Reset applied during Sleep In Mode.
6. When Reset applied during Sleep Out Mode.
7. It is necessary to wait 5msec after releasing RESX before sending commands. Also Sleep Out command cannot be sent for 120msec.



## 8.0 OPTICAL SPECIFICATIONS

### 8.1 Overview

The test of optical specifications shall be measured at  $25\pm 2^{\circ}\text{C}$  and at the center of the measuring spot on the Display surface shall stay fixed. The backlight should be operating for 30 minutes prior to measurement (Transmissive mode).

Optical specifications are based on BOE POL architecture assessment (surface treatment is HC). Changes in POL architecture will affect optical specifications.

Optical should be tested base on BOE's BLU (Color Rank: B03 , SuiJing; Bef\*2) .

Optics should be tested without fingerprint and smudge on panel after peeling off the protective film of polarizer.

Table 4-1 Optical Specifications

Item		B2 SPEC	Remark
Trans Mode (BLU ON)	Trans	Typ 1.2% , Min 0.9%	Test equipment: M1 , Note 4.3
	CR	Min 30 ; Typ 60	Test equipment: M3 , Note 4.2
	Color Gamut (NTSC)	Min 9% ; Typ 14%	Only CF , C Light , without OC, NTSC Note 4.5
	W (x, y)	(0.308 , 0.318) $\pm 0.03$	
	R (x, y)	(0.448 , 0.299) $\pm 0.03$	
	G (x, y)	(0.316 , 0.433) $\pm 0.03$	
	B (x, y)	(0.195 , 0.209) $\pm 0.03$	
	View Angle (12/6/9/3点)	Typ 40/35/35/35 Min 30/25/25/25	Test equipment: M1 source pad down , CR>10 Note 4.1
	Human viewing Angle	Eight o 'clock	Source Pad Down
	Response Time	Max 30ms	Test equipment: M1 Tr+Tf , W90%/B10%. Note 4.4
Reflection Mode (BLU OFF)	Reflection (SCE)	Min 5.6% ; Typ 7.5%	Test equipment: M2 Note 4.3
	CR	Min 5 ; Typ 7	Test equipment: M2 Note 4.2
	Color Gamut (NTSC)	Min 8% ; Typ 12%	NTSC Test equipment: M2 Note 4.5
	W (x, y)	(0.311 , 0.366) $\pm 0.03$	
	View Angle (12/6/9/3点)	Typ 60/60/60/60 Min 50/50/50/50	Test equipment: M1 source pad down , CR>2 Note 4.1

### Measuring Condition:

Transmittance Mode ( Blu on ), Reflection Mode( Blu off );

Dark room (ambient luminance  $\leq 1\text{lux}$ ); Ambient temperature:  $25 \pm 2^\circ\text{C}$

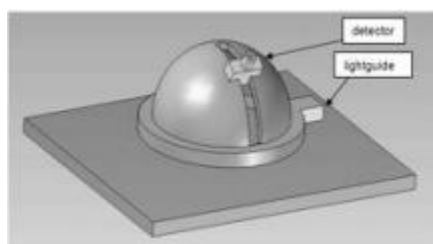
**Measuring Point:** Center of the Active area (one point) unless otherwise specified

### Measuring Equipment:

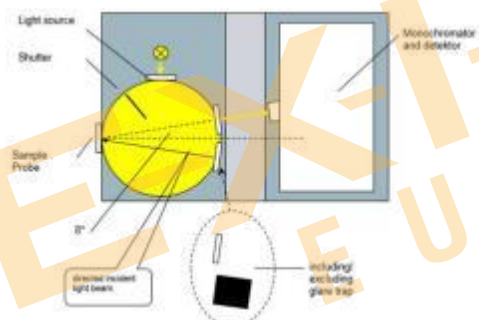
#### <1> Reflective Mode measurement system

Backlight is off, test point AA center

M1: Measure equipment: DMS903



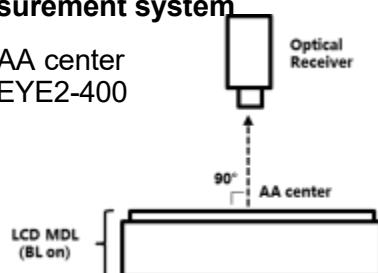
M2: Measure equipment: CM700D ( $8^\circ$ , D65)



#### <2> Transmissive mode measurement system

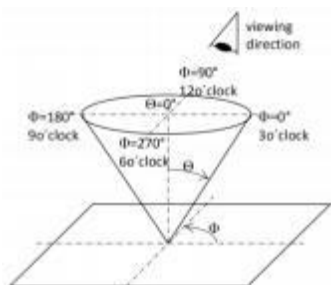
Backlight is on , test point AA center

M3: Measure equipment: EYE2-400



## Notes :

1. Specifications are based on module testing. Transmittance/Reflection viewing angle is the angle at which the contrast ratio is greater than 10 / 2. The viewing are determined for the horizontal or 3, 9 o'clock direction and the vertical or 6, 12 o'clock direction with respect to the optical axis which is normal to the LCD surface. Spec. will be updated according to measured values. Human viewing angle is 8'clock in trans mode (source pad 6'clock).

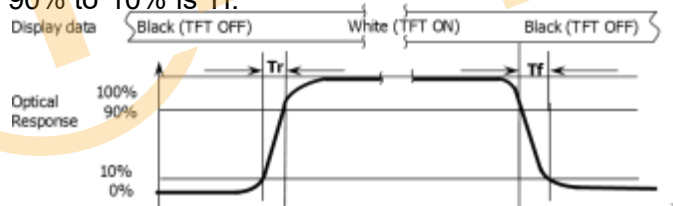


2. Specifications are based on module testing. Contrast measurements shall be made at viewing angle of  $\theta = 0^\circ$  and at the center of the LCD surface. Luminance shall be measured with all pixels in the view field set first to white, then to the dark (black) state. Contrast Ratio (CR) is defined mathematically.

$$CR = \frac{\text{Luminance when displaying a white raster}}{\text{Luminance when displaying a black raster}}$$

3. Specifications are based on module testing. Center transmittance and reflection of white is defined as the LCD surface. Luminance shall be measured with all pixels in the view field set first to white. Trans based on BOE背光 (Color Rank: B03, 穗晶; Bef\*2).

4. Specifications are based on module testing. Response time (black to white):  $T_r + T_f$  Black(10%) to White(90%). As shown in figure below, the time needed for the transmittance to change from 10% to 90% is  $T_r$ , and 90% to 10% is  $T_f$ .



5. The color coordinates and Color Gamut of Transmittance mode specified in Table 4. shall be measured at the center of the color filter glass with C - light source. The color coordinates of Reflection mode specified in Table 4. shall be measured at the center of the panel with D65 light. Color Gamut of Reflection Mode should be tested with LCM and calculated by RGB'sx andy as below:

$$NTSC = \frac{ABS[Rx \cdot (Gy - By) + Gx \cdot (Ry - By) + Bx \cdot (Ry - Gy)]}{2 \cdot 0.1582}$$

## 9. Reliability test items

No.	Test Item	Test Condition	Notes
1	High Temp. Storage	+80°C / 48H	1. Functional test is OK. Missing Segment, short, unclear segment non-display, display abnormally and liquid crystal leakage are un-allowed. 2. No low temperature bubbles, end seal loose and fall, frame rainbow.
2	Low Temp. Storage	-30°C / 48H	
3	High Temp. Operating	+70°C / 48H	
4	Low Temp. Operating	-20°C / 48H	
5	High Temperature / Humidity storage	50°C x 90%RH / 48H	
6	Thermal and cold shock	Static state, -20°C (30min) ~60°C (30min), 50 cycles	
7	ESD test	±2KV, Human Body Mode, 150pF/330Ω; ±4KV, Air Mode, 150pF/330Ω;	

Note: All tests above are practiced at module type.

There is no display function NG issue occurred, All the cosmetic specification is judged before the reliability stress.

## 10.0 General Precaution

### 10.1 Use Restriction

This product is not authorized for use in life supporting systems, aircraft navigation control systems, military systems and any other application where performance failure could be life-threatening or otherwise catastrophic.

### 10.2 Assembly Precaution

- 1、 Please use the mounting hole on the module side in installing and do not bending or wrenching LCD in assembling. And please do not drop, bend or twist LCD module in handling.
- 2、 Please design display housing in accordance with the following guide lines.
- 3、 Housing case must be destined carefully so as not to put stresses on LCD all sides and not to wrench module. The stresses may cause non-uniformity even if there is no non-uniformity statically.
- 4、 Keep sufficient clearance between LCD module back surface and housing when the LCD module is mounted. The clearance in the design is recommended taking into account the tolerance of LCD module thickness and mounting structure height on the housing.
- 5、 Please do not push or scratch LCD panel surface with any-thing hard. And do not soil LCD panel surface by touching with bare hands. ( Polarizer film, surface of LCD panel is easy to be flawed.)
- 6、 Please do not press any parts on the rear side such as source IC, gate IC, and FPC during handling LCD module. If pressing rear part is unavoidable, handle the LCD module with care not to damage them.
- 7、 Please wipe out LCD panel surface with absorbent cotton or soft cloth in case of it being soiled.
- 8、 Please wipe out drops of adhesives like saliva and water on LCD panel surface immediately. They might damage to cause panel surface variation and color change. 11.2.7 Please do not take a LCD module to pieces and reconstruct it. Resolving and reconstructing modules may cause them not to work well.

### 10.3 Disassembling or Modification

Do not disassemble or modify the module. It may damage sensitive parts inside LCD module, and may cause scratches or dust on the display. Leadtek does not warrant the module, if customers disassemble or modify the module.

### 10.4 Breakage of LCD Panel

- 1、 If LCD panel is broken and liquid crystal spills out, do not ingest or inhale liquid crystal, and do not contact liquid crystal with skin.
- 2、 If liquid crystal contacts mouth or eyes, rinse out with water immediately.
- 3、 If liquid crystal contacts skin or cloths, wash it off immediately with alcohol and rinse thoroughly with water.
- 4、 Handle carefully with chips of glass that may cause injury, when the glass is broken.

## 10.5 Absolute Maximum Ratings and Power Protection Circuit

- 1、 Do not exceed the absolute maximum rating values, such as the supply voltage variation, input voltage variation, variation in parts' parameters, environmental temperature, etc., otherwise LCD module may be damaged.
- 2、 Please do not leave LCD module in the environment of high humidity and high temperature for a long time.
- 3、 It's recommended employing protection circuit for power supply.

### 11.6 Operation

- 1 、 Do not touch, push or rub the polarizer with anything harder than HB pencil lead. Use fingerstalls of soft gloves in order to keep clean display quality, when persons handle the LCD module for incoming inspection or assembly.
- 2、 When the surface is dusty, please wipe gently with absorbent cotton or other soft material.
- 3 、 Wipe off saliva or water drops as soon as possible. If saliva or water drops contact with polarizer for a long time, they may causes deformation or color fading.
- 4 、 When cleaning the adhesives, please use absorbent cotton wetted with a little petroleum benzine or other adequate solvent.

## 10.6 Static Electricity

- 1 、 Protection film must remove very slowly from the surface of LCD module to prevent from electrostatic occurrence.
- 2、 Because LCD module uses CMOS-IC on TFT-LCD panel, it is very weak to electrostatic discharge. Please be careful with electrostatic discharge.
- 3 、 Persons who handle the module should be grounded through adequate methods.

## 10.7 Disposal

When disposing LCD module, obey the local environmental regulations.

## 10.8 OTHERS

- 1 、 A strong incident light into LCD panel might cause display characteristics' changing inferior because of polarizer film, color filter, and other materials becoming inferior. Please do not expose LCD module direct sunlight land strong UV rays.
- 2、 Please pay attention to a panel side of LCD module not to contact with other materials in preserving it alone.
- 3、 For the packaging box, please pay attention to the followings:
- 4、 Packaging box and inner case for LCD are designed to protect the LCDs from the damage or scratching during transportation. Please do not open except picking LCDs up from the box.
- 5、 Please do not pile them up more than 6 boxes. (They are not designed so.) And please do not turn over.
- 6、 Please handle packaging box with care not to give them sudden shock and vibrations. And also please do not throw them up.
- 7、 Packing box and inner case for LCDs are made of cardboard. So please pay attention not to get them wet. (Such like keeping them in high humidity or wet place can occur getting them wet.)

## 11.0 Packing form-TBD



深圳市丽台电子有限公司

**Shenzhen Leadtek Electronics Co.,Ltd**

# Incoming Inspection Standards

## 来料检验标准

**Model No. / 产品型号:** Applies 0.95~5.0 Inch Touch Display Screen

Updated Date /生效日期: 2022-05-20

Version / 版本: A0

**Customer confirmation :** \_\_\_\_\_

Record of Revision / 修订履历

[illegible]



## 1.Scope of application /适用范围.

This document shall be applied to 0.95~5.0 inch touch display screen.

本文件适用于0.95~5.0 寸触摸显示屏.

## 2.Inspection conditions and environment /检验条件与环境.

### 2.1 Inspection Conditions /检验条件:

(1) Inspection Distance /检测距离: 35cm ±5cm.

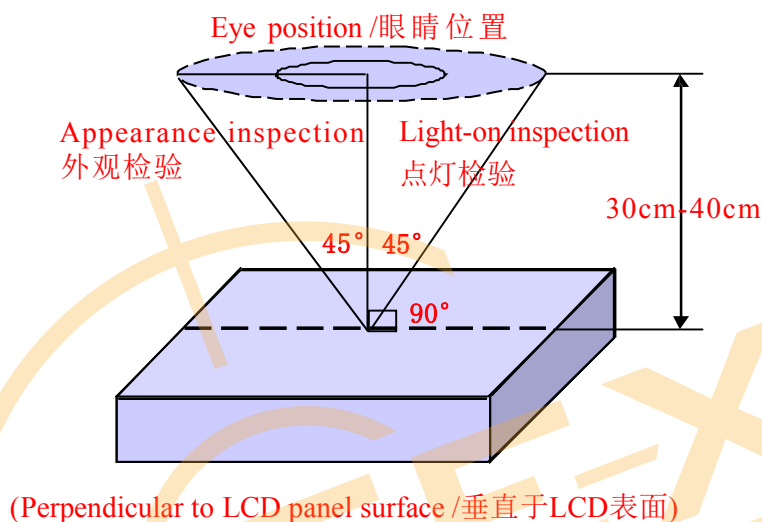
(2) Check time /检验时间:

Displays performance test /功能测试: 2~3S /Image, Cosmetic Inspection /外观检验:10~12S.

(3) Check the viewing angle /检验视角:

Light-on Inspection Angle /点灯检验角度: ±45°.

Cosmetic Inspection Angle /外观检验角度: ±45°.



### 2.2 Inspection environment /检验环境:

Ambient Temperature 温度		25°C±5°C
Ambient Humidity 湿度		55±5%RH
Ambient Illumination 亮度	Cosmetic Inspection 外观检验	800-1000 Lux
	Functional Inspection 点灯检验	200~300Lux

### 2.3 Sampling Conditions /抽样条件:

(1) Quantity to be inspected /批量: Quantity of shipment lot per model /单次运送单一型号数量.



## (2) Sampling method /抽样方法:

Sampling Plan /抽样计划		GB/T 2828.1- 2003
		Normal Inspection , Single Sampling 正常检验、单次抽样
		General inspection level: II 一般检验水平: 二级
AQL	Major Defect /主要缺陷	0.65
	Minor Defect /次要缺陷	1.0

(3) The classification of Major(MA) and Minor(MI) defects is shown as “3.1 Classification of defects” .  
主缺 (MA) 及次缺 (MI) 定义于”3.1缺陷分类”.

## 3.Terms And Definitions /术语和定义

### 3.1 Classification of defects / 缺陷分类 :

#### (1) Major defects /主要缺陷:

A major defect is a defect that is likely to result in failure, or to reduce materially the usability of the product for its intended purpose .

可导致产品功能失效或减少产品可用性的缺陷.

#### (2) Minor defects /次要缺陷:

It will not cause the product to fail and reduce the defects in the effective use and operation of the product.

不会导致产品功能失效和减少产品的有效使用与操作的缺陷.

### 3.2 Point defects /点状缺陷:

The size of the point defect is defined by the diameter D, and the average diameter of the defect is

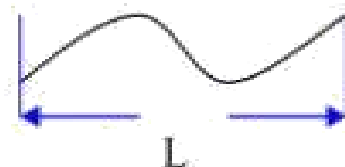
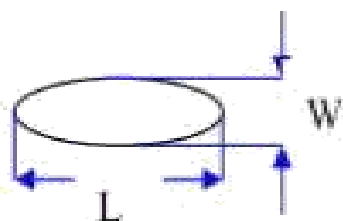
$$D=1/2 (W+L) .$$

点状缺陷的大小是由直径 D 定义的, 缺陷的平均直径  $D=1/2(W+L)$ .

### 3.3 Linear defects /线状缺陷:

When defect size  $L \geq 2W$ , the defect count as liner type defect. Size of linear defect is defined by length ( L ) and the maximum width ( W ).

当缺陷尺寸  $L \geq 2W$  时, 被视为线状缺陷, 线状缺陷是由长度 (L) 和最大宽度 (W) 定义的.



### 3.4 LCD sub-pixel dot /LCD子像素点

(1) Definition /定义 : The point defect area is greater than 50% of the LCD sub-pixel area, and is visible through ND5% filter masking .

子像素点缺陷面积大于 50% LCD子像素面积, 且透过 ND5%遮盖是可见的.

(2) The drawing of 1/2 area sub-pixel definition / 1/2 面积的子像素定义绘图:

The 1/2 area sub-pixel can be defined as below one or more of specific shapes

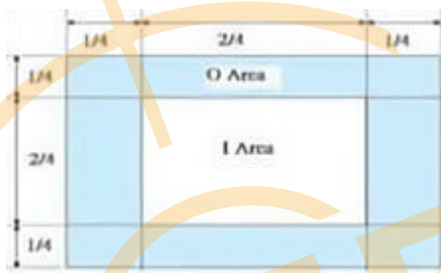
1/2 面积的子像素可以定义为如下一个或多个特定形状图:



### 3.5 Small bright dot /细碎亮点 :

Point defects smaller than "LCD sub-pixels" /小于“LCD子像素点”的点缺陷.

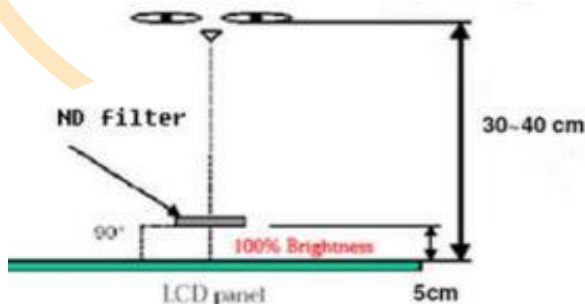
(Ratio of Zone I to Zone O / I 区与 O 区比例: 1: 2: 1)



### 3.6 ND filter inspection method /ND卡的检验方法:

Hold the ND filter about 5cm above the display area, with your eyes 30-40cm away from the panel, and observe for 2~3 seconds.

在显示区域上方大约 5cm 处握住 ND 卡, 眼睛距离面板 30-40cm, 观察2~3 秒.



3.7 Any FPC surface problems that do not leak copper on the surface and do not cause functional failure are acceptable.

任何 FPC 表面问题, 表面未露铜和不造成功能失效是可以接受的.

3.8 Extraneous substances that can be wiped out , like Finger point,Particles are not considered as a defect .

可以被擦拭干净的表面物质不视为缺陷 (如手指印, 尘粒) .

3.9 Defects that are covered by the material and are not visible to the eye and do not affect the function and use are not considered defects.

会被物料覆盖目视不可见，且不影响功能与使用的缺陷不视为缺陷。

3.10 Panel damage /面板损伤:

Glass damage outside the AA display area that does not affect the effective wiring is acceptable.

AA 显示区域以外的玻璃损伤，不影响有效线路是可以接受的。

3.11 Issues not specified or defined in this acceptance standard shall be handled through friendly negotiation between the two parties.

本允收标准中未规定或定义的问题，双方友好协商处理。

## 4. Inspection standards /检验标准

### 4.1 Structural Dimensions /结构尺寸规格

Serial Number 序号	Measurement items /测量项目		Specification /规格	Remark /备注
	名称 /Name	Unit /单位	Tolerance /公差	
1	Outside dimension: Length 尺寸: 长	mm /毫米	0.10mm~0.20mm	Please refer to the product specification for detailed dimensions and tolerances 详细的尺寸规格和公差请参考产品规格书
2	Outside dimension: Width 尺寸: 宽	mm /毫米	0.10mm~0.2mm	
3	Outside dimension: Thickness 尺寸: 厚	mm /毫米	0.20mm~0.30mm	

### 4.2 Appearance Inspection Specification /外观检验规格

(D : diameter, W : width, L : length, N : quantity, DS : spacing )

Inspection area 检验区域	Inspection items 检验项目	Inspection specifications 检验规格	Defect category 缺陷类别	
Glass 玻璃	Wire(on Array) 线路	Can't be damaged 不能损伤	MA	
	Chipping/corner breaking 崩边/破角	Can't affect the effective lines and functions 不能影响有效线路和功能	MA	
	Edge 边缘	There must be no extensional cracks 不可有延伸性裂纹	MA	
Silicone 硅胶	Silicone coating 硅胶涂布	The height must not exceed the LCD CF surface 高度不能超过LCD CF面		MI
	Glue overflow 溢胶	Can't cover FPC, POL, etc 不能覆盖到FPC、POL等		MI

Inspection area 检验区域	Inspection items 检验项目	Inspection specifications 检验规格	Defect category 缺陷类别	
PCBA  FPC  Connector 连接器	Appearance 外观	Scratches or injuries are not allowed to cause copper exposure 划伤或损伤不允许表面出现露铜		MI
	Component 元器件	Can't be damaged and lack 不能损伤和缺少	MA	
	Gold finger oxidation 金手指氧化	Not allowed 不允许		MI
	Connection status 连接状况	The connection must be accurate and stable 必须准确稳定连接	MA	
	Break 破裂	Not allowed 不允许	MA	
	Soldering, false soldering/tinning/tin beads 假焊/连锡/锡珠	Not allowed 不允许	MA	
POL 偏光片	Scratches 划伤	1. $W \leq 0.05\text{mm}$ ; $L \leq 5\text{mm}$ , Ignore (忽略) 2. $0.05\text{mm} < W \leq 0.10\text{mm}$ ; $L \leq 5\text{mm}$ ; $N \leq 3$ ; $DS \geq 10\text{mm}$ 3. $0.10\text{mm} < W$ ; $5\text{mm} < L$ , Not allowable (不允许)		MI
	Dent 凹凸印	1. $D \leq 0.15\text{mm}$ , Ignore (忽略) 2. $0.15\text{mm} < D \leq 0.30\text{mm}$ ; $N \leq 3$ ; $DS \geq 10\text{mm}$ 3. $0.30\text{mm} < D$ , Not allowable (不允许)		MI
	Bubbles 气泡	1. $D \leq 0.15\text{mm}$ , Ignore (忽略) 2. $0.15\text{mm} < D \leq 0.30\text{mm}$ ; $N \leq 3$ ; $DS \geq 10\text{mm}$ 3. $0.30\text{mm} < D$ , Not allowable (不允许)		MI
	Point defects 点状不良	1. $D \leq 0.15\text{mm}$ , Ignore (忽略) 2. $0.15\text{mm} < D \leq 0.30\text{mm}$ ; $N \leq 3$ ; $DS \geq 10\text{mm}$ 3. $0.30\text{mm} < D$ , Not allowable (不允许)		MI
	Edge bubbles 边缘气泡	1. Within 1/2BM of the display area, it is not allowed 显示区往外 1/2BM 区域内, 不允许 2. The display area is 1/2 outside the BM area, and it is not controlled 显示区往外 1/2BM 区域以外, 不管控		MI
	Dirty/watermarked 脏污/水印	No dirt/water lines/finger marks are allowed, and must be wiped clean 不允许有脏污/水印/手指印, 须擦拭干净方可		MI
	Warping 起翘	Not allowed 不允许		MI
	Attaching offset 贴偏	It is necessary to completely cover the display area outward, within the 1/2BM area, or without leaking POL edges after TP is attached 需完整覆盖显示区往外、1/2BM 区以内或贴合 TP 后不会出现漏偏光片边缘		MI
	Mixture 混料	Mixing different types of POL or not using POL as required by the BOM, not allowed 不允许混贴不同型号的 POL 或未按 BOM 要求使用 POL	MA	

Inspection area 检验区域	Inspection items 检验项目	Inspection specifications 检验规格	Defect category 缺陷类别	
TP&CG	Point defects 点状不良	1. $D \leq 0.15\text{mm}$ , Ignore (忽略) 2. $0.15\text{mm} < D \leq 0.30\text{mm}$ ; $N \leq 3$ ; $DS \geq 10\text{mm}$ 3. $0.30\text{mm} < D$ , Not allowable (不允许)		MI
	Scratches 划伤	1. $W \leq 0.05\text{mm}$ ; $L \leq 5\text{mm}$ , Ignore (忽略) 2. $0.05\text{mm} < W \leq 0.10\text{mm}$ ; $L \leq 5\text{mm}$ ; $N \leq 3$ ; $DS \geq 10\text{mm}$ 3. $0.10\text{mm} < W$ ; $5\text{mm} < L$ , Not allowable (不允许) 4. There is a feeling scratch, Not allowable 有感划伤, 不允许		MI
	Edges and corners cracked 崩角/崩边	1. Product front / 产品正面: Edge and corner chipping is not allowed 崩角、崩边不允许 2. Product back / 产品背面: $X \leq 0.5$ , $Y \leq 0.5$ , $Z \leq 1/2T$ ; $N \leq 3$ ; $DS \geq 10\text{mm}$		MI
	Silk screen 丝印	The silk screen is clear, complete and correct 丝印清晰、完整、内容正确		MI
	Dirty 脏污	Non-wipeable dirt, not allowed 不可擦拭的脏污, 不允许		MI
	Broken 破损	Not allowable 不允许	MA	
	Ink color aberration 油墨色差	$\Delta E > 1$ , Not allowable (不允许)		MI
	Cover pinholes 针孔	1. $D \leq 0.10\text{mm}$ , $N \leq 3$ , $DS \geq 10\text{mm}$ , allowable 2. $D > 0.10\text{mm}$ , intensive pinholes (密集型针孔), Not allowable (不允许)		MI
	IR holes IR孔	Dirt, deviation, color difference, etc. are not allowed 不允许脏污、偏位、色差等		MI
BL 背光	Backlight separation 背光分离	Not allowable 不允许		MI
	Deformation of rubber iron and rubber frame 胶铁、胶框变形	Use the plug gauge 0.3mm on the flat surface and can snap in and judge NG 在平面上使用塞规0.3mm卡翘曲位置, 能卡进判定NG		MI
	The iron frame is oxidized and not tightened 铁框氧化、卡不紧	Not allowable 不允许		MI
	Backlight sticky solder beads, glue, etc 背面粘锡珠、残胶等	Not allowable 不允许		MI
	Inkjet coding, Barcode, QR code 喷码/条码/二维码	The Inkjet coding is clear and complete, the barcode and QR code can be scanned normally, and the content and format match 喷码清晰完整、条码和二维码可正常扫描, 内容和格式相符		MI
	Accessories (protective film, double-sided tape, insulating adhesive, etc.) 辅料 (保护膜、双面胶、绝缘胶等)	Defects such as missing pastes, sticking deviations, defects, and fractures are not allowed 不允许有漏贴、贴偏、残缺、断裂等缺陷		MI



### 4.3 Electrical test specifications /电性检查规格

(D : diameter, W : width, L : length, N : quantity, DS : spacing )

Inspection items 检验项目	Inspection specifications 检验规格	Defect category 缺陷类别	
Glass bright spots/dark spots 玻璃亮点/暗点	1. $D \leq 0.15\text{mm}$ , Ignore (忽略) 2. $0.15\text{mm} < D \leq 0.30\text{mm}$ ; $N \leq 3$ ; $DS \geq 10\text{mm}$ 3. $0.30\text{mm} < D$ , Not allowable (不允许)		MI
Mura	Use ND5% filter masking, visual invisibility is OK, 200~300Lux 使用ND5%遮盖, 目视不可见即为OK, 200~300Lux		MI
Small bright dot 细碎亮点	Use ND5% filter masking, visual invisibility is OK 使用ND5%遮盖, 目视不可见即为OK		MI
Light leakage 漏光	1. Use ND5% filter masking, visual invisibility is OK 使用ND5%遮盖, 目视不可见即为OK 2. If necessary, sign off on the sample 必要时, 签限定样		MI
Backlight black/white dots 背光黑点/白点	1. $D \leq 0.15\text{mm}$ , Ignore (忽略) 2. $0.15\text{mm} < D \leq 0.30\text{mm}$ ; $N \leq 3$ ; $DS \geq 10\text{mm}$ 3. $0.30\text{mm} < D$ , Not allowable (不允许)		MI
Linear foreign bodies 线状异物 (异物毛丝等)	1. $W \leq 0.05\text{mm}$ ; $L \leq 5\text{mm}$ , Ignore (忽略) 2. $0.05\text{mm} < W \leq 0.10\text{mm}$ ; $L \leq 5\text{mm}$ ; $N \leq 3$ ; $DS \geq 10\text{mm}$ 3. $0.10\text{mm} < W$ ; $5\text{mm} < L$ , Not allowable (不允许)		MI
Black/White Print 黑印/白印	Use ND5% filter masking, visual invisibility is OK 使用ND5%遮盖, 目视不可见即为OK		MI
The display is uneven 显示不均匀	Use ND5% filter masking, visual invisibility is OK 使用ND5%遮盖, 目视不可见即为OK		MI
The brightness is uneven 亮度不均匀	Brightness uniformity $< 85.0\%$ , Not allowable 亮度均匀性 $< 85.0\%$ , 不允许		MI
Displacement of the membrane 膜材移位	Not allowable 不允许		MI
Interference pattern/Newtonian pattern 干涉纹/牛顿纹	Not allowable 不允许		MI
Display abnormal 显示异常	Not allowable 不允许	MA	
No display 无显示	Not allowable 不允许	MA	
Line/Missing Drawing 线条/缺画	Not allowable 不允许	MA	
Splash screen 闪屏	Not allowable 不允许	MA	
LCD grid LCD网格	Not allowable 不允许	MA	
Afterimage 残影	Not allowable 不允许	MA	
Wrong viewing angle 视角错误	Not allowable 不允许	MA	
No touch 无触摸	Not allowable 不允许	MA	
Touch the jump point 触摸跳点	Not allowable 不允许	MA	
Not sensitive 触摸不灵敏	Not allowable 不允许	MA	

## **Disclaimer**

ALL PRODUCTS, PRODUCT SPECIFICATIONS AND DATA ARE SUBJECT TO CHANGE WITHOUT NOTICE TO IMPROVE RELIABILITY, FUNCTION OR DESIGN OR OTHERWISE.

Texim Europe B.V. its affiliates, agents, and employees, and all persons acting on its or their behalf (collectively, "Texim"), disclaim any and all liability for any errors, inaccuracies or incompleteness contained in any datasheet or in any other disclosure relating to any product.

Texim makes no warranty, representation or guarantee regarding the suitability of the products for any particular purpose or the continuing production of any product.

It is the customer's responsibility to validate that a particular product with the properties described in the product specification is suitable for use in a particular application.

Parameters provided in datasheets and / or specifications may vary in different applications and performance may vary over time.

All operating parameters, including typical parameters, must be validated for each customer application by the customer's technical experts.

Please contact us if you have any questions about the contents of the datasheet.

This may not be the latest version of the datasheet. Please check with us if a later version is available.





## Headquarters & Warehouse

Elektrostraat 17  
NL-7483 PG Haaksbergen  
The Netherlands

T: +31 (0)53 573 33 33  
E: [info@texim-europe.com](mailto:info@texim-europe.com)  
Homepage: [www.texim-europe.com](http://www.texim-europe.com)



### The Netherlands

Elektrostraat 17  
NL-7483 PG Haaksbergen

T: +31 (0)53 573 33 33  
E: [nl@texim-europe.com](mailto:nl@texim-europe.com)



### Belgium

Zuiderlaan 14, box 10  
B-1731 Zellik

T: +32 (0)2 462 01 00  
E: [belgium@texim-europe.com](mailto:belgium@texim-europe.com)



### UK & Ireland

St Mary's House, Church Lane  
Carlton Le Moorland  
Lincoln LN5 9HS

T: +44 (0)1522 789 555  
E: [uk@texim-europe.com](mailto:uk@texim-europe.com)



### Germany

Bahnhofstrasse 92  
D-25451 Quickborn

T: +49 (0)4106 627 07-0  
E: [germany@texim-europe.com](mailto:germany@texim-europe.com)



### Germany

Martin-Kollar-Strasse 9  
D-81829 München

T: +49 (0)89 436 086-0  
E: [muenchen@texim-europe.com](mailto:muenchen@texim-europe.com)



### Austria

Warwitzstrasse 9  
A-5020 Salzburg

T: +43 (0)662 216 026  
E: [austria@texim-europe.com](mailto:austria@texim-europe.com)



### Nordic

Stockholmsgade 45  
2100 Copenhagen

T: +45 88 20 26 30  
E: [nordic@texim-europe.com](mailto:nordic@texim-europe.com)



### Italy

Martin-Kollar-Strasse 9  
D-81829 München

T: +49 (0)89 436 086-0  
E: [italy@texim-europe.com](mailto:italy@texim-europe.com)