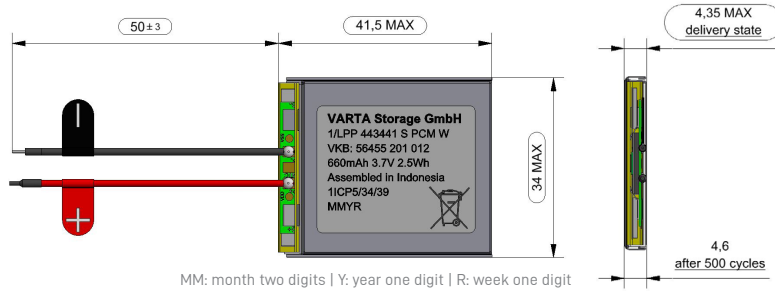


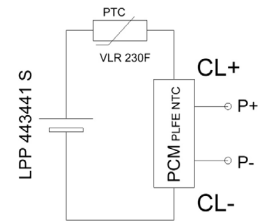
1/LPP 443441 S PCM W



3.7 V | 660 mAh nominal | 2.5 Wh | VKB: 56455 201 012 (SoC 50%, EOL), 56455 201 017 (SoC 30%)



Circuit Diagram



GENERAL (Battery pack incl. safety circuit and wires)

Wire	AWG26 UL1007 (red wire (+), black wire (-))
Cell	LPP 441443 S
PCM	Yes
NTC	None
ID	None
Configuration	1S
Weight	Approx. 13 g

ELECTRICAL SPECIFICATION

Nominal voltage	3.7 V
Rated capacity at (0.5 C / 0.2 C), 23 °C ± 5 °C	630 mAh min., 660 mAh nominal
Watt-hour rating	2.5 Wh
Charging method	Constant current + constant voltage
Max. charge voltage	4.2 V (± 0.05 V)
Max. continuous charge current	630 mA (limited by cell)
Rec. charge cut off	6.3 mA or timer 2.5h
Max. continuous discharge current	1,260 mA (limited by cell)
Rec. discharge cut off	3 V
Internal impedance	Approx. 120 mΩ
Exp. cycle life at (1.0 C / 1.0 C), 23 °C ± 5 °C	≥ 500 cycles ≥ 70 %

CELL & BATTERY PROTECTION

Overcharge detection	4.275 V ± 0.025 V (0.7 sec. to 1.3 sec. delay, resume 4.275 V ± 0.025 V)
Overdischarge detection	2.3 V ± 0.058 V (14 msec. to 26 msec. delay, resume 2.3 V ± 0.058 V)
Overcurrent detection	2.0 A to 4.5 A (8 msec. to 16 msec. delay at discharge)

ENVIRONMENTAL CONDITIONS

Charge	0 °C to +45 °C
Discharge	-20 °C to +60 °C
Storage	1 month at -20 °C to +60 °C ≥ 80 % 3 months at -20 °C to +45 °C ≥ 80 % 1 year at -20 °C to +30 °C ≥ 80 %
Humidity	0 to 85 RH %

SAFETY CERTIFICATIONS

Please follow VARTA handling and safety precautions for Lilon & LiPolymer.
 The cell used is a UL recognized component according to UL1642 and IEC62133-2 and IEC62133 ed.2 certified
 The battery meets the requirements of battery directives and the battery parts are RoHS-compliant.
 The battery is certified according to IEC62133-2, IEC62133 ed.2 and UN38.3.

Minimum order quantity: 600 pcs / Order multiples: 120 pcs - Product for OEM customers only! Please note there is no difference between the two VKBs except for the State of Charge.

**CELL
PAC**
LITE