

Attracting Tomorrow



Products and Business Opportunities

# Power EMC

# Din Rail EMI Filter

For mounting on DIN rail TH35

Rated Voltage (@ 55°C)	250V AC
Rated Current	6A to 30A
Leakage current	<2 mA
Insertion Loss (Z=50Ω, depending of filter type and frequency)	Com Mode: 20 - 65 dB Diff Mode: 20 - 70dB
L x W x H (in mm)	97 x 60 x 44
Weight (in g)	200 - 310



B84742A\*R725

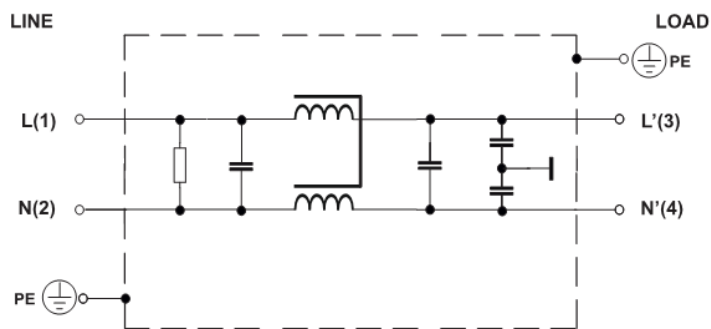
Link to Datasheet:

[https://www.tdk-electronics.tdk.com/inf/30/db/emc\\_2014/B84742A\\_R725.pdf](https://www.tdk-electronics.tdk.com/inf/30/db/emc_2014/B84742A_R725.pdf)

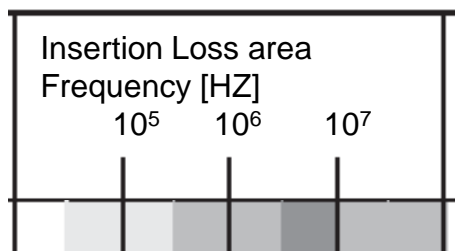
# 2 – line filter for TH35 Din Rail mounting

- This filter is the first filter type of TDK Electronics AG for the mounting on Din Rail TH35
- There will be 5 variants for a rated current up to 30A
- It is a 2-line Filter for a rated voltage of 250V AC (50/60 Hz) / 250V DC

Typical circuit diagram



- The Insertion Loss depends on the frequency and the variant:



- All types will be U<sub>L</sub> approved!

Type	Rated Current
B84742A0006R725	6 Amp
B84742A0010R725	10 Amp
B84742A0016R725	16 Amp
B84742A0020R725	20 Amp
B84742A0030R725	30 Amp



[www.global.tdk.com](http://www.global.tdk.com) • [www.tdk-electronics.tdk.com](http://www.tdk-electronics.tdk.com)