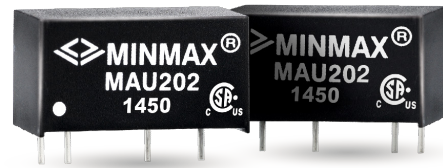


## FEATURES

- ▶ Industrial Standard SIP-7 Package
- ▶ Unregulated Output Voltage
- ▶ I/O Isolation 3000 VDC
- ▶ Operating Ambient Temp. Range -40°C to +90°C
- ▶ UL/cUL/IEC/EN 60950-1 Safety Approval



## PRODUCT OVERVIEW

The MINMAX MAU200 series is a range of 1W DC-DC converters in a small SIP Package featuring high I/O isolation of 3000VDC. An excellent efficiency allows an operating temperature range of -40°C to +90°C. These converters offer an economical solution for many applications where a voltage has to be isolated i.e for noise reduction, ground loop elimination, digital interfaces or for board level power distribution where a higher I/O-isolation is required.

### Model Selection Guide

Model Number	Input Voltage (Range) VDC	Output Voltage VDC	Output Current		Input Current		Load Regulation % (max.)	Max. capacitive Load µF	Efficiency (typ.)
			Max.	Min.	@Max. Load	@No Load			@Max. Load
			mA	mA	mA(typ.)	mA(typ.)			%
MAU201	5 (4.5 ~ 5.5)	3.3	260	5	235	30	10	220	73
MAU202		5	200	4	281		10		71
MAU203		9	110	2	260		8		76
MAU204		12	84	1.5	258		7	100#	78
MAU205		15	67	1	258		7		78
MAU206		±5	±100	±2	278		10		72
MAU207		±9	±56	±1	262		8	100#	77
MAU208		±12	±42	±0.8	258		7		78
MAU209		±15	±34	±0.7	258		7		79
MAU211	12 (10.8 ~ 13.2)	3.3	260	5	96	12	8	220	74
MAU212		5	200	4	114		8		73
MAU213		9	110	2	106		5		78
MAU214		12	84	1.5	105		5	100#	80
MAU215		15	67	1	104		5		80
MAU216		±5	±100	±2	113		8		74
MAU217		±9	±56	±1	106		5	100#	79
MAU218		±12	±42	±0.8	104		5		81
MAU219		±15	±34	±0.7	105		5		81
MAU221	24 (21.6 ~ 26.4)	3.3	260	5	49	7	8	220	73
MAU222		5	200	4	59		8		71
MAU223		9	110	2	54		5		76
MAU224		12	84	1.5	54		5	100#	78
MAU225		15	67	1	53		5		79
MAU226		±5	±100	±2	58		8		72
MAU227		±9	±56	±1	55		5	100#	76
MAU228		±12	±42	±0.8	53		5		79
MAU229		±15	±34	±0.7	53		5		80

\* Min. Output Current for Lower Load Regulation

# For each output

**Input Specifications**

Parameter	Model	Min.	Typ.	Max.	Unit
Input Voltage Range	5V Input Models	4.5	5	5.5	VDC
	12V Input Models	10.8	12	13.2	
	24V Input Models	21.6	24	26.4	
Input Surge Voltage (1 sec. max.)	5V Input Models	-0.7	---	9	VDC
	12V Input Models	-0.7	---	18	
	24V Input Models	-0.7	---	30	
Input Filter	All Models	Internal Capacitor			

**Output Specifications**

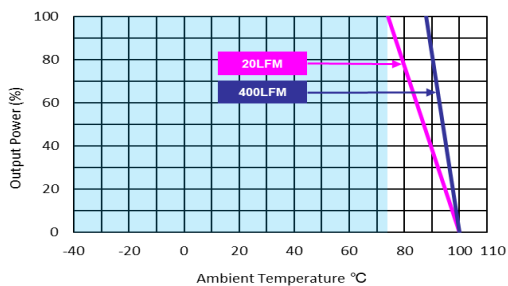
Parameter	Conditions	Min.	Typ.	Max.	Unit
Output Voltage Setting Accuracy		---	±1.0	±3.0	%Vnom.
Output Voltage Balance	Dual Output, Balanced Loads	---	±0.1	±1.0	%
Line Regulation	For Vin Change of 1%	---	±1.2	±1.5	%
Load Regulation	Io=20% to 100%	See Model Selection Guide			
Ripple & Noise	0-20 MHz Bandwidth	---	65	100	mV <sub>P-P</sub>
Temperature Coefficient		---	±0.01	±0.02	%/°C
Short Circuit Protection	0.5 Second Max., Automatic Recovery				

**General Specifications**

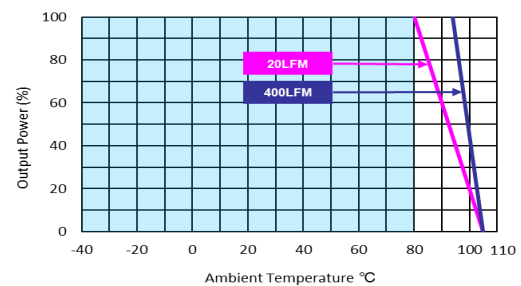
Parameter	Conditions	Min.	Typ.	Max.	Unit
I/O Isolation Voltage	60 Seconds	3000	---	---	VDC
I/O Isolation Resistance	500 VDC	10	---	---	GΩ
I/O Isolation Capacitance	100kHz, 1V	---	60	100	pF
Switching Frequency		70	100	120	kHz
MTBF (calculated)	MIL-HDBK-217F@25°C, Ground Benign	2,000,000			Hours
Safety Approvals	UL/cUL 60950-1 recognition (CSA certificate), IEC/EN 60950-1(CB-report)				

**Environmental Specifications**

Parameter	Min.	Max.	Unit
Operating Ambient Temperature Range Nominal Vin, Load 100% Inom. (for Power Derating see relative Derating Curves)	-40	+90	°C
Case Temperature	---	+90	°C
Storage Temperature Range	-50	+125	°C
Humidity (non condensing)	---	95	% rel. H
Lead Temperature (1.5mm from case for 10Sec.)	---	260	°C

**Power Derating Curve**


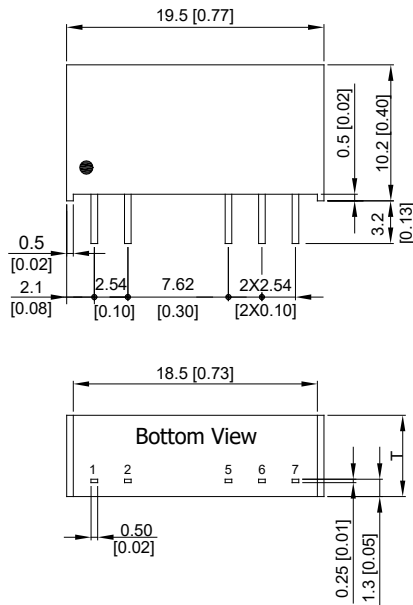
3.3Vo, 5Vo, ±5Vo Output Models



9Vo, 12Vo, 15Vo, ±9Vo, ±12Vo, ±15Vo Output Models

**Notes**

- 1 Specifications typical at Ta=+25°C, resistive load, nominal input voltage and rated output current unless otherwise noted.
- 2 These power converters require a minimum output loading to maintain specified regulation, operation under no-load conditions will not damage these modules; however they may not meet all specifications listed.
- 3 We recommend to protect the converter by a slow blow fuse in the input supply line.
- 4 Other input and output voltage may be available, please contact MINMAX.
- 5 Specifications are subject to change without notice.

**Package Specifications**
**Mechanical Dimensions**

**Pin Connections**

Pin	Single Output	Dual Output
1	+Vin	+Vin
2	-Vin	-Vin
5	-Vout	-Vout
6	No Pin	Common
7	+Vout	+Vout

T: 6.1mm(0.24 inch) for 5V&12V Input Models

T: 7.1mm(0.28 inch) for 24V Input Models

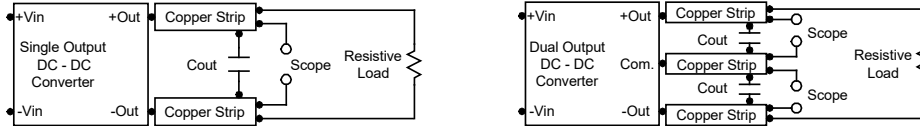
- ▶ All dimensions in mm (inches)
- ▶ Tolerance: X.X±0.25 (X.XX±0.01)  
X.XX±0.13 (X.XXX±0.005)
- ▶ Pins ±0.05(±0.002)

**Physical Characteristics**

Case Size (5V&12V Input)	: 19.5x6.1x10.2mm (0.77x0.24x0.40 inches)
Case Size (24V Input)	: 19.5x7.1x10.2mm (0.77x0.28x0.40 inches)
Case Material	: Non-Conductive Black Plastic (flammability to UL 94V-0 rated)
Pin Material	: Alloy 42
Weight (5V&12V Input)	: 2.2g
Weight (24V Input)	: 2.6g

**Test Setup**
**Peak-to-Peak Output Noise Measurement Test**

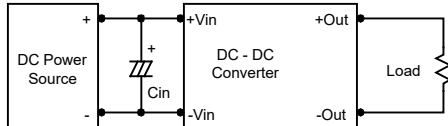
Use a  $C_{out}$  0.33 $\mu$ F ceramic capacitor. Scope measurement should be made by using a BNC socket, measurement bandwidth is 0-20 MHz. Position the load between 50 mm and 75 mm from the DC-DC Converter.


**Technical Notes**
**Maximum Capacitive Load**

The MAU200 series has limitation of maximum connected capacitance at the output. The power module may be operated in current limiting mode during start-up, affecting the ramp-up and the startup time. For optimum performance we recommend 100 $\mu$ F maximum capacitive load for dual outputs and 220 $\mu$ F capacitive load for single outputs. The maximum capacitance can be found in the data sheet.

**Input Source Impedance**

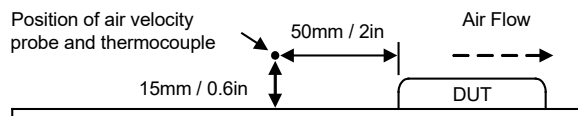
The power module should be connected to a low ac-impedance input source. Highly inductive source impedances can affect the stability of the power module. In applications where power is supplied over long lines and output loading is high, it may be necessary to use a capacitor at the input to ensure startup. Capacitor mounted close to the power module helps ensure stability of the unit, it is recommended to use a good quality low Equivalent Series Resistance (ESR < 1.0 $\Omega$  at 100 kHz) capacitor of a 2.2 $\mu$ F for the 5V input devices, a 1.0 $\mu$ F for the 12V input devices and a 0.47 $\mu$ F for the 24V devices.


**Output Ripple Reduction**

A good quality low ESR capacitor placed as close as practicable across the load will give the best ripple and noise performance. To reduce output ripple, it is recommended to use 1.0 $\mu$ F capacitors at the output.


**Thermal Considerations**

Many conditions affect the thermal performance of the power module, such as orientation, airflow over the module and board spacing. To avoid exceeding the maximum temperature rating of the components inside the power module, the case temperature must be kept below 90°C. The derating curves are determined from measurements obtained in a test setup.



## The Netherlands



Elektrostraat 17  
NL-7483 PG Haaksbergen

T: +31 (0)53 573 33 33  
F: +31 (0)53 573 33 30  
E: [nl@texim-europe.com](mailto:nl@texim-europe.com)

## Belgium



Zuiderlaan 14 bus 10  
B-1731 Zellik

T: +32 (0)2 462 01 00  
F: +32 (0)2 462 01 25  
E: [belgium@texim-europe.com](mailto:belgium@texim-europe.com)

## UK & Ireland



St. Mary's House, Church Lane  
Carlton Le Moorland  
Lincoln LN5 9HS

T: +44 (0)1522 789 555  
F: +44 (0)845 299 22 26  
E: [uk@texim-europe.com](mailto:uk@texim-europe.com)

## Germany North



Bahnhofstrasse 92  
D-25451 Quickborn

T: +49 (0)4106 627 07-0  
F: +49 (0)4106 627 07-20  
E: [germany@texim-europe.com](mailto:germany@texim-europe.com)

## Germany South



Martin-Kollar-Strasse 9  
D-81829 München

T: +49 (0)89 436 086-0  
F: +49 (0)89 436 086-19  
E: [germany@texim-europe.com](mailto:germany@texim-europe.com)

## Austria



Warwitzstrasse 9  
A-5020 Salzburg

T: +43 (0)662 216 026  
F: +43 (0)662 216 026-66  
E: [austria@texim-europe.com](mailto:austria@texim-europe.com)

## Nordic region



Sdr. Jagtvej 12  
DK-2970 Hørsholm

T: +45 88 20 26 30  
F: +45 88 20 26 39  
E: [nordic@texim-europe.com](mailto:nordic@texim-europe.com)

## Italy



Via Matteotti 43  
IT-20864 Agrate Brianza (MB)

T: +39 (0)39 971 3293  
F: +39 (0)39 971 3293  
E: [italy@texim-europe.com](mailto:italy@texim-europe.com)

## General information



[info@texim-europe.com](mailto:info@texim-europe.com)  
[www.texim-europe.com](http://www.texim-europe.com)