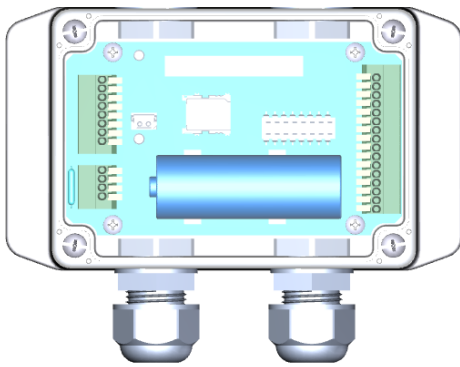


IOT400-DL3B1 / IOT400-DL301

LoRa Data Logger

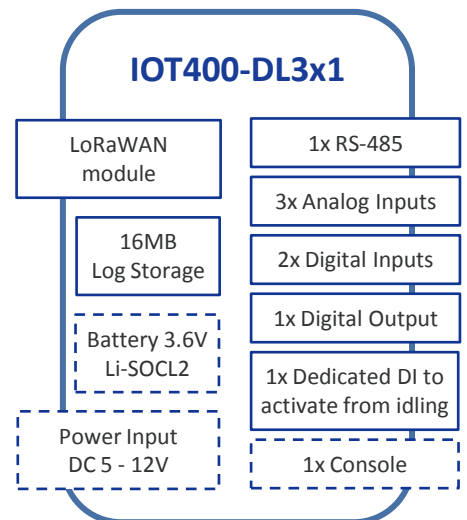


The IOT400 is a cost-effective solution for data acquisition and wireless telemetry. It leverages LoRaWAN technology that is optimized for sending IoT traffic with low data rates over long distances. The IOT400 provides ultra-low power consumption which allows it to operate on a single battery for years. Based on open source LoRaWAN standard it has high interoperability between devices and networks. The IOT400 offers event management functionality that allows task automation based on your own scenario.



Applications:

- AMI/AMR: gas, water
- Smart Infrastructure: street lighting, parking, waste management
- Precision agriculture and farming
- Industrial sensors
- Alarms, event triggering



Battery-powered & easy deploy



- Battery-powered with health alerts
- Option for external power supply

LoRaWAN technology



- Low power, low data rates
- Long range communication

Ingress Protection (IP65)

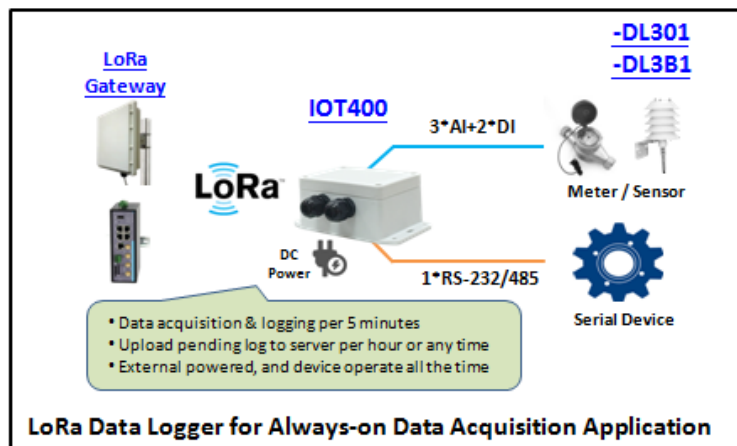
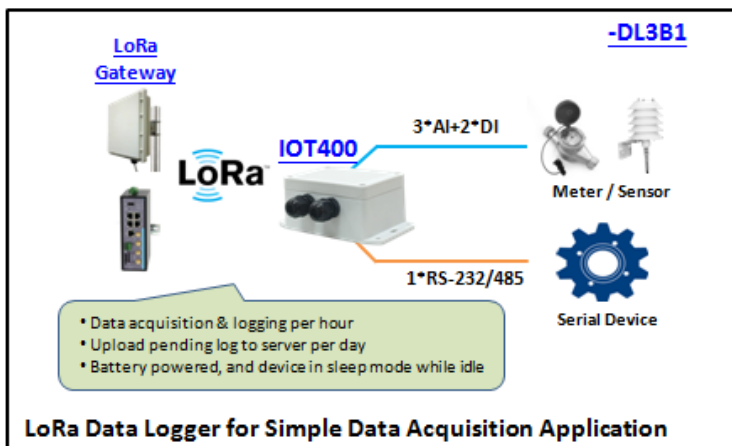


- Harsh environments, wide t° range
- Weatherproof, rugged design

Data acquisition and events



- AI/DI/Modbus_RTU for sensors/meters
- Logged data storage, scheduled uplink



Specification Summary

Device Interface

- **LoRa Module:** 1* LoRa module
- **Log Storage:** 16MB internal storage for data logging
- **I/O Connector:** 2* M16 waterproof connectors with multi-hole cable gland for wiring the required ports to external sensors/meters.

Available H/W Ports

- **Analog Input:** 3* AI ports (supports 0-10V / 4-20mA)
- **Digital Input:** 2* DI ports (supports Pulse, Dry Contact)
- **Digital Output:** 1* DO port (Non-Relayed Output)
- **Field Bus:** 1* RS-485 for Modbus RTU/ASCII
- **Console Port:** 1* RS232 for device configuration
- **Wake-up Port:** 1* internal Reed Switch, and reserved wake-up port for device wake-up triggering.
- **Power Source :** 3000~4000mAh 3.6V Li-SOCL2 battery, and reserved option for attaching external 5V~12V DC power.
- **Antenna :** 1* LoRa antenna.

WAN & Uplink

- **Uplink:** LoRa, support standard [LoRaWAN™](#) protocol and Class A/C.
- **Connection:** By Schedule Plan (per Day/Week/Month), By Event

Field Comm.

- **Modbus:** Master for accessing attached Modbus RTU/ASCII Slaves
- **Data Logging:** By schedule plan (per Hour/Day/Week/Month), By Event

Administration

- **Configuration:** Windows Utility, Console CLI
- **System:** Backup & Restore, Reboot & Reset, SysLog, Upgrade

Service

- **Event Handling:** User Defined Manage/Notify Event; Action & Trigger by schedule, Modbus, I/O

Environment

- **OP/Storage Temp.:** -30°C ~ 70°C ; -40°C ~ 85°C
- **Humidity:** 10%~95% (non-condensing)
- **Enclosure:** Plastic (PC, UL-94V2), Bracket Mount
- **Dimension:** 105x 75x55mm (Enclosure only); 132x103x55mm (including Cable Gland, Brackets);

Certificate - CE

- Standards & Regulation
- EMI: EN 55032: 2015 +AC: 2016 Class B
- EMS: EN 55024, IEC 61000-4, IEC 61000-6
- Radio: EN 301 489, EN50385
- Safety: EN 62368-1

Package Accessory

- 1*Device
- 1*3000~4000mAh 3.6V Li-SOCL2 Battery (for -DN3B1)
- 2*Cable Tie for fixing battery (for -DN3B1)
- 4*Rubber Feet

SKU Information:

IOT400-DL3B1-00-yy : LoRa Node, with Battery

IOT400-DL301-00-yy : LoRa Node, without Battery

'yy': Area Variant. As below table

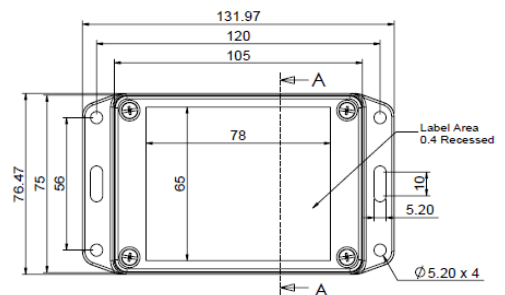
yy	SKU	Band / Channel	Channel Plan	System Cert.
E0	EU	863 - 870 MHz	EU863-870	TBC
U0	US	902 - 928 MHz	US902-928	TBC
A0	AS	923 MHz	AS923	TBC

Comment:

- Specifications are subject to change without prior notice.
- Besides CE, other regional certification needs to be checked for availability.

Mechanic Drawing

• Top View



• Side View



AMIT Wireless Inc.

TEL: +886 (0)6 505 8026 FAX: +886 (0)6 505 8068

Web: <http://www.amit.com.tw> Email: sales@amit.com.tw

No. 28, Lane 31, Huandong Rd., Sec. 1, Xinshi Dist., Tainan City 74146, Taiwan (R.O.C.)