

The official EDM type 2 Evaluation Carrier Board brings you a rich variety of interfaces and options at your fingertips.

Wide range of jumper selectable audio, video and touch interfaces.

Optional smart battery pack implementation.

Power 5 VDC	LAN	LVDS	HDMI	PCIe x4	SATA 2nd	LPC	HDA	SPDIF	CANBus x2	SD	SPI x2	UART x2	Buttons + GPIO	RSVD
		LVDS	HDMI	PCIe x2	SATA 1st	USB OTG	USB Host	FS 1st				FC x2		RTC

Core System

System on Module EDM Type 2 compliant

Video

External Display 2x HDMI
2 channel 18/24 bit LVDS

Touch

Controller Jumper selectable:
TSC2046 (4 wire by SPI)
TSC2004 (4 wire by I²C)
ADS7845 (5 wire by SPI)
USB 4/5 wire touch controller
Connector 4 wire touchpanel (USB/I²C/SPI)
5 wire touchpanel (USB/SPI)

Audio

Codec Jumper selectable:
Freescale SGT5000 (I²S)
TI TLV320AIC23B (I²S)
Realtek ALC892-CG (HDA)
Connector 5x 3.5 mm jack Surround audio
S/PDIF

Sensors

Real Time Clock Maxim Integrated DS1337+

Expansion and Connectivity

Expansion slots 2x mini-PCIe + SIM cardslot (for 3G communication)
1x PCIe x1 expansion slot
1x PCIe x4 expansion slot
1x Gigabit LAN
Ethernet
USB 2x USB 3.0 Host
1x micro-USB 3.0 / 2.0 OTG
1x USB 2.0 Host

Storage

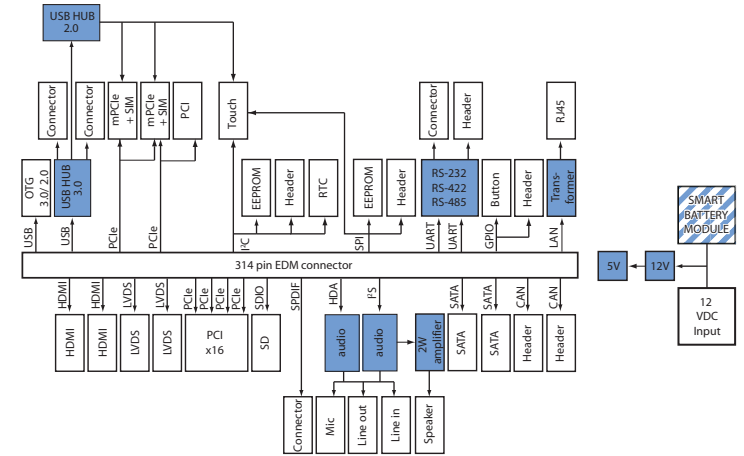
Connector 2x SATA
1x SD cardslot (SDIO)

Communication and Control

Header 2x CAN Bus
2x UART (RS-232/422/485)
2x SPI (shared with EEPROM)
2x I2C (shared with EEPROM)
LPC (Low pincount)
8x GPIO (shared with buttons)
Reserved / manufacturing pins

Power Specifications

Input power 12 VDC
or Smart Battery

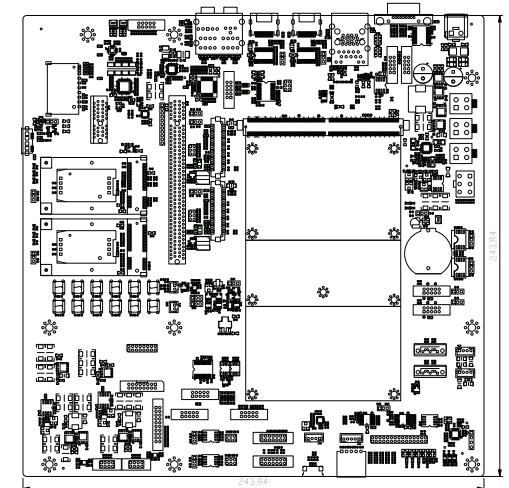


Mechanical and Environmental

Temperature Commercial: 0° to 60° C
Humidity 10-90%
Module Connector 314 pins MXM3
Form Factor microATX
Dimensions 244 x 244 mm (9% x 9% inch)
MTBF >100,000 hours
Weight 380 grams
Shock 50G / 25ms
Vibration 20G / 0-600 Hz

Dimensions

units in mm



Ordering Information

EDM2-WIZARD-START EDM Type 2 Evaluation board including cablekit and adaptor

The Wizard design files including schematics and gerber files are available to design your own EDM Carrier Board.

The Netherlands



Elektrostraat 17
NL-7483 PG Haaksbergen

T: +31 (0)53 573 33 33
F: +31 (0)53 573 33 30
E: nl@texim-europe.com

Belgium



Zuiderlaan 14 bus 10
B-1731 Zellik

T: +32 (0)2 462 01 00
F: +32 (0)2 462 01 25
E: belgium@texim-europe.com

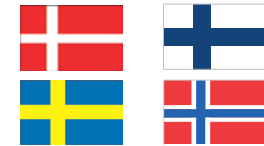
UK & Ireland



St. Mary's House, Church Lane
Carlton Le Moorland
Lincoln LN5 9HS

T: +44 (0)1522 789 555
F: +44 (0)845 299 22 26
E: uk@texim-europe.com

Nordic region



Sdr. Jagtvej 12
DK-2970 Hørsholm

T: +45 88 20 26 30
F: +45 88 20 26 39
E: nordic@texim-europe.com

Germany North



Bahnhofstrasse 92
D-25451 Quickborn

T: +49 (0)4106 627 07-0
F: +49 (0)4106 627 07-20
E: germany@texim-europe.com

Germany South



Martin-Kollar-Strasse 9
D-81829 München

T: +49 (0)89 436 086-0
F: +49 (0)89 436 086-19
E: germany@texim-europe.com

Austria



Warwitzstrasse 9
A-5020 Salzburg

T: +43 (0)662 216 026
F: +43 (0)662 216 026-66
E: austria@texim-europe.com

General information



info@texim-europe.com
www.texim-europe.com