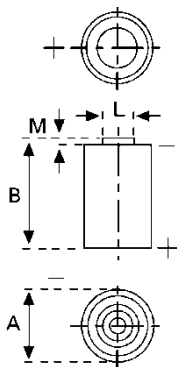


Data Sheet



Type Number	6127	
Designation IEC	---	
System	Li-Manganese dioxide / Organic Electrolyte	
UL Recognition	MH13654 (N)	
Nominal Voltage	3 V	
Typical Capacity C	950 mAh	
Load 5.6 kOhm, at 20°C down to 2 V		
Weight (approx.)	11,5 g	
Volume	5 ccm	
Coding	Date of Manufacturing Month / Year	
Temperature Ranges	min	max.
Storage	-55 °C	70 °C
Discharge	-30 °C	75 °C*
Dimensions	min	max.
Diameter (A)	14,15	14,45
Height (B)	25,09	25,30
Shoulder Diameter[L].....	7,00	
Shoulder Height [M].....	0,90	

Distributed by:


www.texim-europe.com

Typical Capacities (at 20°C)

Discharge Type	Load	End Voltage:	2.0 V
Continuous 24h/d,7d/w	5600 Ω	Time:	1860 h
		Capacity [mAh]:	950
		Energy [mWh]:	2700
Continuous 24h/d,7d/w	2000 Ω	Time:	670 h
		Capacity [mAh]:	930
		Energy [mWh]:	2600
Continuous 24h/d,7d/w	1000 Ω	Time:	335 h
		Capacity [mAh]:	900
		Energy [mWh]:	2400
Constant current	50 μA	Capacity [mAh]:	1000

* Contact VARTA if the application is intended to be outside the range of -30°C to +75°C.

Information and contents in this data sheet are for reference purpose only.
They do not constitute any warranty or representation and are subject to change without notice.
For most current information and further details, please contact your VARTA representative.

VARTA Microbattery GmbH, Daimlerstr. 1, D-73479 Ellwangen/Jagst

Subject to change without prior notice!

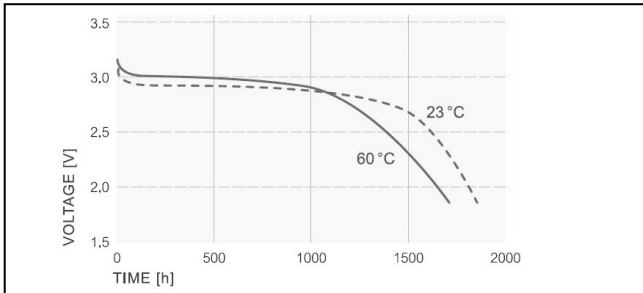
Tel.: (+49) 7961/921-0, Telefax: (+49) 7961/921-553

Date of issue: 2014-09-16

Data Sheet

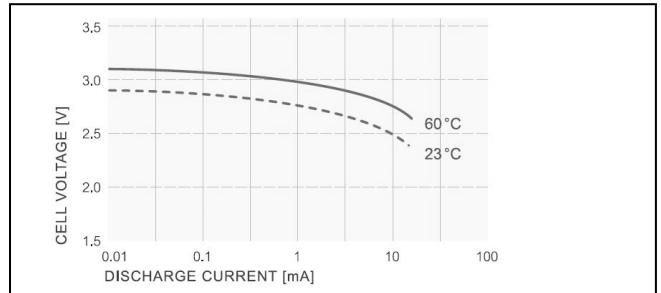
Performance Data:

• **Temperature Characteristics***



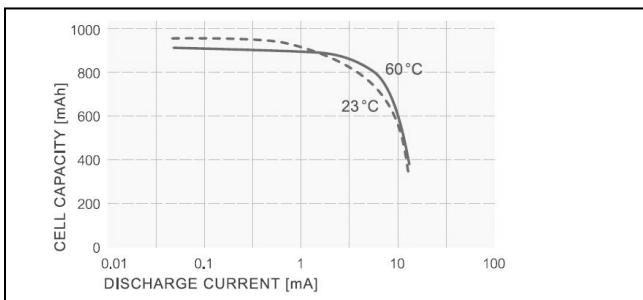
*Discharge Load 5.6 kΩ

• **Operating Voltage vs. load resistance***

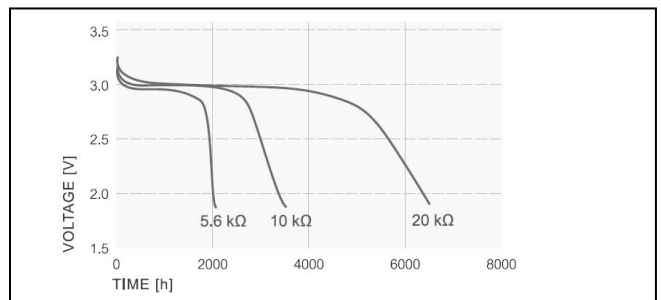


*Discharge depth 50%

• **Capacity vs. load resistance**



• **Discharge Characteristics***



* at room temperature 21°C

- Self-discharge rate < 1% at room temperature
- Storage life > 10 years
- Operating life* > 10 years

* depending on environmental condition and energy consumption

*Information and contents in this data sheet are for reference purpose only.
They do not constitute any warranty or representation and are subject to change without notice.
For most current information and further details, please contact your VARTA representative.*

The Netherlands



Elektrostraat 17
NL-7483 PG Haaksbergen

T: +31 (0)53 573 33 33
F: +31 (0)53 573 33 30
E: nl@texim-europe.com

Belgium



Zuiderlaan 14 bus 10
B-1731 Zellik

T: +32 (0)2 462 01 00
F: +32 (0)2 462 01 25
E: belgium@texim-europe.com

UK & Ireland



St. Mary's House, Church Lane
Carlton Le Moorland
Lincoln LN5 9HS

T: +44 (0)1522 789 555
F: +44 (0)845 299 22 26
E: uk@texim-europe.com

Germany North



Bahnhofstrasse 92
D-25451 Quickborn

T: +49 (0)4106 627 07-0
F: +49 (0)4106 627 07-20
E: germany@texim-europe.com

Germany South



Martin-Kollar-Strasse 9
D-81829 München

T: +49 (0)89 436 086-0
F: +49 (0)89 436 086-19
E: germany@texim-europe.com

Austria



Warwitzstrasse 9
A-5020 Salzburg

T: +43 (0)662 216 026
F: +43 (0)662 216 026-66
E: austria@texim-europe.com

Nordic region



Sdr. Jagtvej 12
DK-2970 Hørsholm

T: +45 88 20 26 30
F: +45 88 20 26 39
E: nordic@texim-europe.com

General information



info@texim-europe.com
www.texim-europe.com