
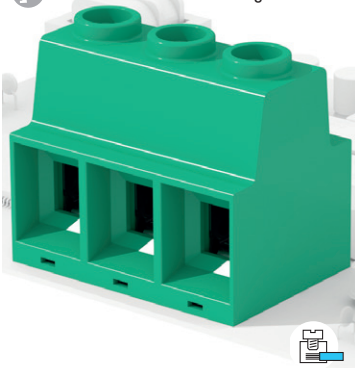


 Suitable for reflow soldering

 **STH®** for reflow soldering


MSL1



General data

Dimensional class:	high
Standard colour:	green for wave soldering, black for reflow soldering
Pitches:	metric 15 mm (.591 in)
Screw dimension:	M5
Recommended/highest tightening torque:	2.1/2.5 Nm (18.59/22.13 lbf-in)
PCB thickness:	max. 2.4 mm (.094 in)
PCB hole diameter:	min. 1.6 mm (.063 in)
Stripping length:	18 mm (.71 in)
Operating temperature range:	-40 °C ÷ +130 °C (-40 °F ÷ +266 °F)
STH operating temperature range:	-40 °C ÷ +130 °C (-40 °F ÷ +266 °F)
Contact resistance:	<15 mΩ
Insulation resistance:	>10 ⁹ Ω (500V DC)
Insulating material group:	I (CTI ≥ 600V)

Certifications

135 A

UL (n. E167473)

600 V - 135 A factory wiring (130 A field wiring) - 20÷1 AWG - 2.5 Nm

Data according to

IEC EN 60947-7-4

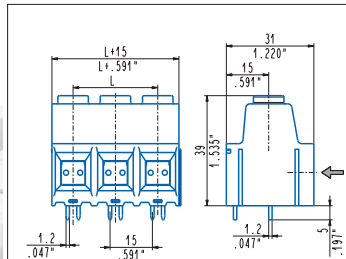
1000 V - 125 A - T 110 - 35 mm² solid (115 A - 25 mm² stranded)

Application values for end-use equipment have to be in accordance to norms and applicable to it.
 The certifications of some product's versions could be pending, for more detailed and updated data please refer to our web site www.sauro.net or your representative Sales Manager

Distributed by:



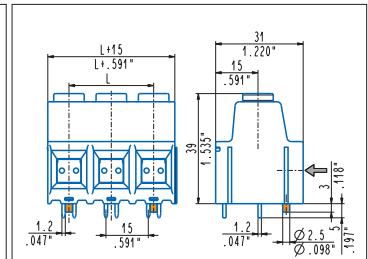
www.texim-europe.com



Straight, modular

MPP_DQ0 2÷8 poles, 15 mm .591" pitch

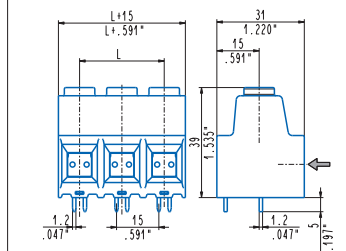
MPPH_DQ0-ON 2÷8 poles, 15 mm .591" pitch



Straight, modular, pegs

MPP_DQ0-0000P 2÷8 poles, 15 mm .591" pitch

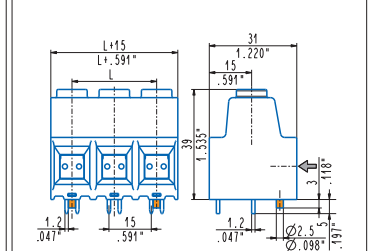
MPPH_DQ0-0N00P 2÷8 poles, 15 mm .591" pitch



Straight, side stackable

MPP_DQ0 2÷8 poles, 15 mm .591" pitch

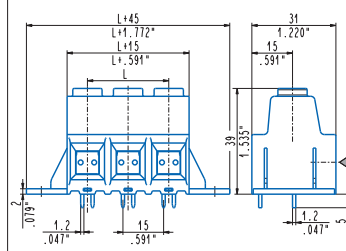
MPPH_DQ0-ON 2÷8 poles, 15 mm .591" pitch



Straight, side stackable, pegs

MPP_DQ0-0000P 2÷8 poles, 15 mm .591" pitch

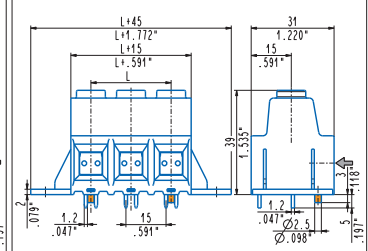
MPPH_DQ0-0N00P 2÷8 poles, 15 mm .591" pitch



Straight, mounting flanges

MPP_DVQ 1÷8 poles, 15 mm .591" pitch

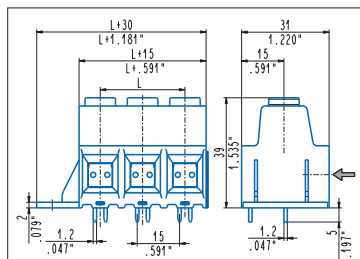
MPPH_DVQ-ON 1÷8 poles, 15 mm .591" pitch



Straight, mounting flanges, pegs

MPP_DVQ-0000P 1÷8 poles, 15 mm .591" pitch

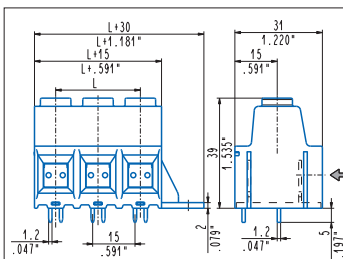
MPPH_DVQ-0N00P 1÷8 poles, 15 mm .591" pitch



Straight, modular, mounting flanges

MPP_DQ0-00S 1÷8 poles, 15 mm .591" pitch

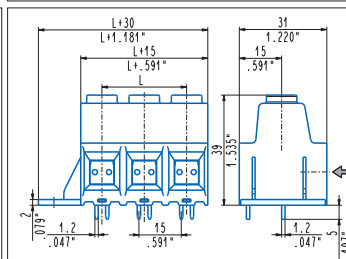
MPPH_DQ0-0NS 1÷8 poles, 15 mm .591" pitch



Straight, modular, mounting flanges

MPP_DQ0-00D 1÷8 poles, 15 mm .591" pitch

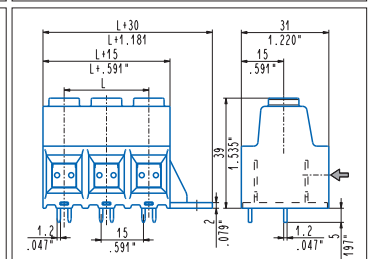
MPPH_DQ0-0ND 1÷8 poles, 15 mm .591" pitch



Straight, side stackable, mounting flanges

MPP_DQ0-00S 1÷8 poles, 15 mm .591" pitch

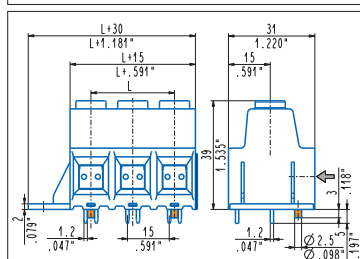
MPPH_DQ0-0NS 1÷8 poles, 15 mm .591" pitch



Straight, side stackable, mounting flanges

MPP_DQ0-00D 1÷8 poles, 15 mm .591" pitch

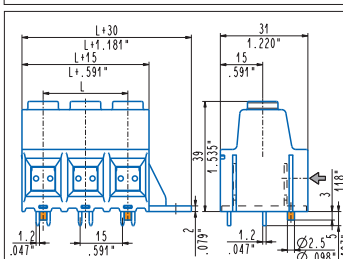
MPPH_DQ0-0ND 1÷8 poles, 15 mm .591" pitch



Straight, left mounting flanges, pegs

MPP_DQ0-00SOP 1÷8 poles, 15 mm .591" pitch

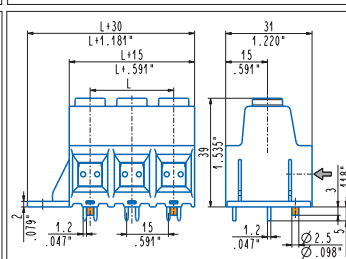
MPPH_DQ0-0NSOP 1÷8 poles, 15 mm .591" pitch



Straight, right mounting flanges, pegs

MPP_DQ0-00DOP 1÷8 poles, 15 mm .591" pitch

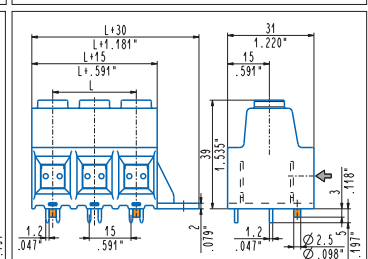
MPPH_DQ0-0NDOP 1÷8 poles, 15 mm .591" pitch



Straight, side stackable, flanges, pegs

MPP_DQ0-00SOP 1÷8 poles, 15 mm .591" pitch

MPPH_DQ0-0NSOP 1÷8 poles, 15 mm .591" pitch



Straight, side stackable, flanges, pegs

MPP_DQ0-00DOP 1÷8 poles, 15 mm .591" pitch

MPPH_DQ0-0NDOP 1÷8 poles, 15 mm .591" pitch

The Netherlands



Elektrostraat 17
NL-7483 PG Haaksbergen

T: +31 (0)53 573 33 33
F: +31 (0)53 573 33 30
E: nl@texim-europe.com

Belgium



Zuiderlaan 14 bus 10
B-1731 Zellik

T: +32 (0)2 462 01 00
F: +32 (0)2 462 01 25
E: belgium@texim-europe.com

UK & Ireland



St. Mary's House, Church Lane
Carlton Le Moorland
Lincoln LN5 9HS

T: +44 (0)1522 789 555
F: +44 (0)845 299 22 26
E: uk@texim-europe.com

Germany North



Bahnhofstrasse 92
D-25451 Quickborn

T: +49 (0)4106 627 07-0
F: +49 (0)4106 627 07-20
E: germany@texim-europe.com

Germany South



Martin-Kollar-Strasse 9
D-81829 München

T: +49 (0)89 436 086-0
F: +49 (0)89 436 086-19
E: germany@texim-europe.com

Austria



Warwitzstrasse 9
A-5020 Salzburg

T: +43 (0)662 216 026
F: +43 (0)662 216 026-66
E: austria@texim-europe.com

Nordic region



Sdr. Jagtvej 12
DK-2970 Hørsholm

T: +45 88 20 26 30
F: +45 88 20 26 39
E: nordic@texim-europe.com

Italy



Via Matteotti 43
IT-20864 Agrate Brianza (MB)

T: +39 (0)39 971 3293
F: +39 (0)39 971 3293
E: italy@texim-europe.com

General information



info@texim-europe.com
www.texim-europe.com